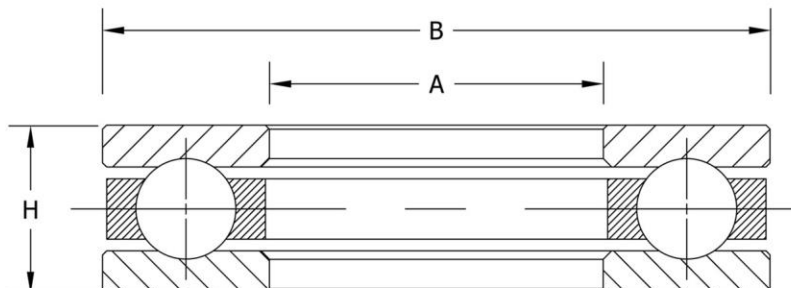


Ball Thrust Bearing

Light Duty
Grooved Race
Single Direction



Bearing Designation	Bore Diameter (d)	Outside Diameter (D)	Width (T)	Dynamic Load C (Lbs)	Static Load Co (Lbs)	Limiting Speed Grease (RPM)	Limiting Speed Oil (RPM)	Weight Lbs
XW2	2.000"	3.063"	0.688"	6300	15570	2400	3000	0.6200
XW2 1/8	2.125"	3.188"	0.688"	6300	15570	2400	3000	0.6900
XW2 1/4	2.250"	3.352"	0.688"	5220	13950	2240	2800	0.7100
XW2 3/8	2.375"	3.438"	0.688"	5220	13950	2240	2800	0.7700
XW2 1/2	2.500"	3.563"	0.688"	5400	15210	2080	2600	0.7600
XW2 5/8	2.625"	3.750"	0.750"	5850	15570	2000	2500	0.8900
XW2 3/4	2.750"	3.875"	0.750"	5760	15570	1920	2400	0.9200
XW2 7/8	2.875"	4.000"	0.750"	6030	17190	1840	2300	1.1000
XW3	3.000"	4.125"	0.750"	8460	26280	1760	2200	1.0200
XW3 1/8	3.125"	4.250"	0.750"	8460	26280	1760	2200	1.0500
XW3 1/4	3.250"	4.375"	0.750"	6300	18630	1680	2100	1.0700
XW3 3/8	3.375"	4.500"	0.750"	6300	18630	1680	2100	1.3000
XW3 1/2	3.500"	4.625"	0.750"	6390	20250	1520	1900	1.1400
XW3 5/8	3.625"	4.750"	0.750"	6390	20250	1520	1900	1.1700
XW3 3/4	3.750"	4.875"	0.750"	6660	21870	1440	1800	1.2100
XW3 7/8	3.875"	5.000"	0.750"	6660	21870	1440	1800	1.2400
XW4	4.000"	5.250"	0.875"	9630	31500	1360	1700	1.7100
XW4 1/4	4.250"	5.500"	0.875"	10530	36000	1280	1600	1.8200
XW4 1/2	4.500"	5.750"	1.000"	10890	40500	1200	1500	2.2900
XW4 3/4	4.750"	6.000"	1.000"	10890	40500	1200	1500	2.3900

US Corporate Headquarters:
2100 Pacific Street
Hauppauge NY, 11788
www.tritanpt.com

Ball Thrust Bearing

Bearing Designation	Bore Diameter (d)	Outside Diameter (D)	Width (T)	Dynamic Load C (Lbs)	Static Load Co (Lbs)	Limiting Speed Grease (RPM)	Limiting Speed Oil (RPM)	Weight Lbs
XW5	5.000"	6.500"	1.018"	12780	42750	1120	1400	2.9260
XW5 1/4	5.250"	6.750"	1.125"	12780	45900	1040	1300	3.4970
XW5 1/2	5.500"	7.000"	1.007"	12780	45900	1040	1300	3.7990
XW5 3/4	5.750"	7.250"	1.125"	13320	48600	960	1200	3.8720
XW6	6.000"	7.625"	1.250"	16200	59400	960	1200	4.7720
XW6 1/2	6.500"	8.125"	1.250"	17010	63900	880	1100	5.1180
XW7	7.000"	8.750"	1.375"	20070	75600	800	1000	6.5050
XW7 1/2	7.500"	9.250"	1.375"	20880	81000	760	950	7.1000
XW8	8.000"	10.00"	1.500"	17370	63900	680	850	9.4000
XW8 1/2	8.500"	10.50"	1.500"	26280	105300	680	850	9.7440
XW9	9.000"	11.25"	1.875"	35190	144000	640	800	15.199
XW9 1/2	9.500"	11.75"	1.875"	36630	152100	600	750	15.790
XW10	10.00"	12.50"	2.125"	48600	196200	560	700	21.148
XW10 1/2	10.50"	13.00"	2.125"	48600	208800	520	650	22.200
XW11	11.00"	13.75"	2.375"	54900	225000	520	650	28.702



Materials: Rings and balls are constructed of thru-hardened 52100 steel. Retainer is machined bronze.

US Corporate Headquarters:
2100 Pacific Street
Hauppauge NY, 11788
www.tritanpt.com



Exclusively Distributed by:



888-4-Bearings