



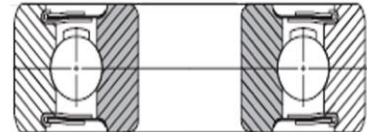
Agricultural Specials

Radial Ball Bearings

202NPP9

Radial Ball Bearing - Round Bore / OD with 3/4" Radius

Bore	OD	Width (OR)	Width (IR)
.505"	1.50"	0.4331"	0.4331"
12.827mm	38.1mm	11mm	11mm



Application

Pickup Reel for Roanoke & Lilliston Peanut Combine
 Replaces: Roanoke #6585
 Lilliston #15-50-025

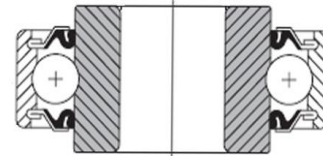
Interchange

202FFH8	BCA
CF2-108	NDH

203KRR2

Radial Ball Bearing – Ext Inner Ring – Trash Seals

Bore	OD	Width (OR)	Width (IR)
.63"	1.5"	0.4727"	0.72"
16 mm	40 mm	12 mm	18.288 mm



Application

For Planters, Gauge Wheel, Rotary Hoe, and other common applications

Interchanges

203RRAR10	BCA	611050C91	IHC
126115	LB	JD9214	John Deere
BS225908	LB	AN100425	John Deere
F16246	Case	20-50-06	Lilliston
666624R91	Case	3203AC	NDH
222279	Ford	66553	New Holland
520117	Gehl	2SH862	White
666624R91	IHC		



Agricultural Specials

203KRR3

Thick Outer Ring (Cam Follower) - Special 2" OD - Trash Seals

Bore	OD	Width (OR)	Width (IR)
0.628"	2.00"	0.5906"	0.5906"
15.951mm		50.8 mm	15 mm

Application

Amadas Combines

Interchange

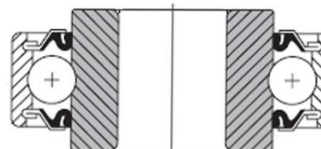
8984YY	BCA
BS226119	LB
CF2-300	NDH



203KRR5

Radial Ball Bearing – Ext Inner Ring – Trash Seals

Bore	OD	Width (OR)	Width (IR)
0.515"	1.5748"	0.4724"	0.720"
13.081 mm	40 mm	12 mm	18.288 mm



Application

Hub & Pulley Bearing. Disc opener for Bridger Planter & Press Wheel for Tye Grain Drill. Also fits other IHC, CASE & JD Applications

Interchange

203RRAR8	BCA
611928R91	IHC
522-20SP	Tye
562134	AC



Agricultural Specials

203KRR6

Radial Ball Bearing – Thick Outer Ring – Ext Inner Ring - Trash Seals

Bore	OD	Width (OR)	Width (IR)
0.640"	1.8504"	0.4724"	0.720"
16.256 mm	47 mm	12 mm	18.288 mm

Application

Used on Allis Chalmers self-propelled models A, A2, B, E, E3, F, F2, G, K, K2, L, L2, M, MH Hillside, MH2 Hillside, M2 Rice, N5, N6 Rotary, N7, R. Grain headers: F, K2, L2, M2, & MH2

204KRR2 X 3/4

Radial Ball Bearing - Round Bore - Extended Inner Ring

Bore	OD	Width (OR)	Width (IR)
0.750"	1.8504"	0.5512"	0.825"
19.05 mm	47 mm	14 mm	20.955 mm

204KRR2 X 11/16

Radial Ball Bearing - 11/16 Hex Bore - Ext Inner Ring

Bore	OD	Width (OR)	Width (IR)
0.6875"	1.8504"	0.610"	0.825"
17.462 mm	47 mm	14 mm	18.669 mm

Interchange

HPC011GP	BCA
JD7126	Deere



Agricultural Specials

204RY2

Gothic Arch - Extended Inner Ring on one side – Sealed

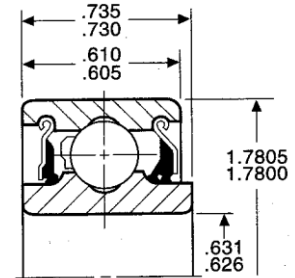
Bore	OD	Width	Width (IR)
0.631"	1.7805"	0.610"	0.735"
16.027 mm	45.225 mm	14 mm	18.669 mm

Application

Double Disc Opener for IH 800
 Planter Disc Opener for John Deere® 7000-7100 Planter
 Bearing for Drill Disc Assembly

Interchange

204FVMN BCA



204FREN

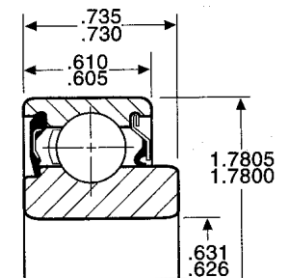
Bore	OD	Width	Width (IR)
.631"	1.17805"	.61"	0.735

Application

Double Disc Opener for IH 800 & JD Planters;
 Tye and Great Plains Drills various applications

Interchange

204PY2	FAF	822-011C	GP
AA21480	JD	550-302	Tye
492532R91	IHC	71502203	AC
145161C91	IHC	852270	White
1268017C91	IHC	400580	Crustbuster
492757R91	IHC	401042	Crustbuster
DG1645-2RS	Koyo	2000028	Haybuster
820-003C	GP		



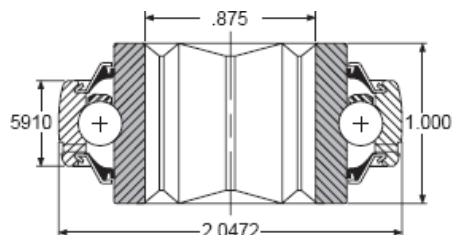


Agricultural Specials

205KRRB2

7/8" Hex Bore, Spherical OD, Seal with Slinger

Bore	OD	Width (OR)	Width (IR)
0.8760"	2.0472"	0.5906"	1.000"
22.25 mm	52 mm	15 mm	25.4 mm



Application

John Deere 7000 – 7300 Planter

Interchange

HPS014GP	BCA
14K205N	LB
2AH05-7/8	NTN
205NPPB	AH02
7A45	Agri
JDAA22097	John Deere
JD9260	John Deere
G2-10003	Kinze

205PP11

1" Bore with Triple Lip Seals

Application

Marker Wheel Bearing, Used on Roll-A-Cone Marker Wheel

205PPB7

Round Bore, Beveled OD, Triple Lip Seals

Bore	OD	Width (OR)	Width (IR)
0.9375"	2.0472"	0.5906"	1.378"
23.813 mm	52 mm	15 mm	35 mm

Application

For KMC/Kelly Lilliston Rolling Cultivator with 15/16" Bore.

Interchange

205TTH		20-61-01	Lilliston
70514	Rhino	04-051-001	KMC/Kelly
BS217948N	LB	20-50-20	Lilliston



Agricultural Specials

205RVA

Triple Lip Trash Seal on Ext Inner Ring side, Single Lip Seal Opposite

Bore	OD	Width (OR)	Width (IR)
0.9375"	2.0472"	0.5906"	1.378"
23.813 mm	52 mm	15 mm	35 mm

Application

Fits John Deere® 700 & 7000 - 7100 Folding Internal, Planter, Furrow Opener and Outer Marker Arm Bearing 1974 & Up. Fits Marliss and Best Drills W & A Row Marker and Forrest City Planter Ripper

Interchange

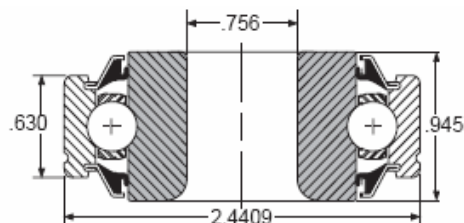
205KRP2	FAF, Peer
205KRP2-I	Ag-Indl
A27002	

206GGH

Bore	OD	Width (OR)	Width (IR)
0.7560"	2.4409"	0.630"	0.945"
19.202 mm	62 mm	16 mm	24 mm

Application

Orthman Row Marker Bearing fits hub assembly #340-043-14" Orthman Barring Off Disc; Cole Planter Opener, New Holland #846 Round Baler Idler Sprocket Bearing



Interchange

206KPP16	FAF
120-001	Orthman
120-070	Orthman
7012998	Cole Row Marker NH

206KRR14

Radial Ball Bearing – Round Bore

Bore	OD	Width (OR)	Width (IR)
1.2509"	2.4409"	0.630"	0.945"
31.773 mm	62 mm	16 mm	24 mm



Agricultural Specials

207KRRB12

Radial Ball Bearing - 1 1/8" Hex Bore – Spherical OD

Bore	OD	Width (OR)	Width (IR)
1.125"	2.8346"	0.6693"	0.9843"
28.575mm	72 mm	17 mm	25 mm

Interchange

HPS102GPE	BCA
17A20	Agri
14A57	Agri

207KRRB17

Radial Ball Bearing - 1 1/4 Hex Bore – Spherical OD

Bore	OD	Width (OR)	Width (IR)
1.25"	2.8346"	0.6693"	0.9843"
31.75mm	72 mm	17 mm	25 mm

Interchange

HPS103GP3	BCA
14A65	Agri

DC208TT

Radial Ball Disc Harrow Bearing - 1 1/8 Square Bore – Cylindrical OD

Bore	OD	Width (OR)	Width (IR)
1.18"	3.1496"	1.2790"	1.6875"
30 mm	80 mm	32.487 mm	42.862 mm

Application

Popular use on Disc Bedder

Interchange

DC208TT	BCA/Federal Mogul/NTN
W208PP	Fafnir / Torrington
W208K3	Fafnir
AK3997	
T16289	
308-W208K3	
40A50	
JD9350	





Agricultural Specials

W208PP21

Radial Ball Bearing - 1 1/4 Hex Bore – Cylindrical OD

Bore	OD	Width (OR)	Width (IR)
1.250"	3.1496"	0.7087"	1.437"
31.75 mm	80 mm	18 mm	36.5 mm

Application

Fits JD430, 435, 530, 535 John Deere Baler

Interchange

HPC104TPA BCA
AE46606 John Deere

209KRRB2

Radial Ball Bearing - 1 1/2 Hex Bore – Spherical OD

Bore	OD	Width (OR)	Width (IR)
1.500"	3.3465"	0.7480"	1.1811"
38.1 mm	85 mm	19 mm	30 mm

Application

Fits JD430, 435, 530, 535 John Deere Baler

Interchange

HPS108GPH BCA
2AH09-1 1/2 NTN
24K209N Link Belt
AE40895 John Deere

210RRB6

Radial Ball Bearing - 1 1/2 Hex Bore – Spherical OD

Bore	OD	Width (OR)	Width (IR)
1.500"	3.5433"	0.8661"	1.1811"
38.1 mm	90 mm	22 mm	30 mm

Application

Fits JD430, 435, 530, 535 John Deere Baler

Interchange

HPS108GPB BCA
G210KPPB2 Peer (Non-relube)
AE42880 John Deere



Agricultural Specials

5203KYY2

Double Row, Extended Inner Ring, Trash Seals

Bore	OD	Width (OR)	Width (IR)
0.640"	1.5748"	1.540"	1.737"
16.256 mm	40 mm	39.116 mm	44.12 mm

Application

JD750 No Till Grain drill and marker assembly. Also fits late model 1700 planter, as well as Kinze, and Great Plains planters

Interchange

5203VVAN	BCA
DAC164044-2RS	Koyo
AN212132	JD
GA6171	KINZE
324461A1	Case

RX84

Citrus Bearing - Hex Bore - Flanged - Trash Seals

Bore	OD	Width (OR)	Width (IR)
0.6945"	2.1248"	0.6248"	0.7949"
17.640 mm	53.970 mm	15.870 mm	20.190 mm

1622 2RSNR

Bore	OD	Width (OR)	Width (IR)
0.5625"	1.3750"	0.4375"	0.4375"
14.288 mm	34.925 mm	11.113 mm	11.113 mm

Application

Fits Snapper self-propelled 21" walk behind.

Replacement for #295-151 & 295-182 wheel arm assemblies with retaining ring.

Interchange

16222-RS10R	Snapper/Kees
1-8767	
2508122	
46983	
7046983	



Agricultural Specials

Z9504B

Bore	OD	Width (OR)	Width (IR)
0.750"	1.7805"	0.610"	0.610"
19.05 mm	45.225 mm	15.494 mm	15.494 mm

Application

Popular Mower Bearing: Fits Yazoo models: YR60 & 76. Also fits Case, Cub Cadet, Dixon, Honda, John Deere, Simplicity, Snapper, Toro/Wheel Horse, Trailmate, Walker, & Woods. Replaces:

Interchange

9504AB		1-3313	Snapper/Kees
9504LAB		516090	Snapper/Kees
Z9504AB		5-4073	Snapper/Kees
536986	Allis-Chalmers	7013313	Snapper/Kees
5407300	Ariens	55-29504AB	Steiner
5412000	Ariens	251-351	Toro
118-5828	Bolens	10-6947	Toro/Wheel Horse
C-28971	Case	10-9842	Toro/Wheel Horse
465003-R91	Cub Cadet	31-0530	Toro/Wheel Horse
470880-R91	Cub Cadet	11109	Trailmate
470880-R91	IH	1185828	Troy Bilt
91102-VA4-003	Honda	1185574	Troy Bilt
JD9239	John Deere	1185574P	Troy Bilt
JD9296	John Deere	5265	Walker
050371	Lesco	16106	Woods/Hesston
833-411-M1	Massey Ferguson	05412000	Woods/Hesston
35-384	Noma	204-060	Yazoo
1-0696	Snapper/Kees		



Agricultural Specials

Integral Shaft Bearings (Water pump style)



885152

Short Stem Cultivator Integral Shaft Bearing with Hole

Application

John Deere, IH & Great Plains Planters. Press Wheel & Closing Wheel on JD7000, 7100, 7200, 7300, MaxEmerge prior to 1992.

GA wheels on Case/IH 800,900,950, & 955 series, and 5400/5500 soybean specials

Interchange

AA21015	JD
AA35741	JD
128558C91	IH
GA2022	Kinze
AC70593891	

885154B

Short Stem Cultivator Integral Shaft Bearing with Hole

Application

Short stem bearing for GA wheel on 7200, 7300, 1700 series, MaxEmerge 21992, all MaxEmerge Plus, PRO, 1530 and 1535

Interchange

AN131668	JD
MF446612M1	
W2289-3	FAG
369851	Nobel

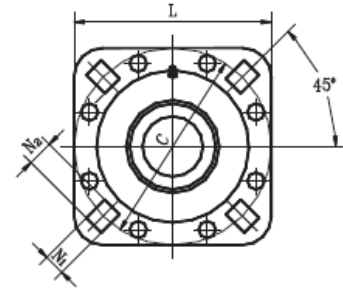


Disc Harrow Bearings – Flanged Style

ST208-1N

Disc Harrow Bearing for 1" Square Shaft, Rectangular (Carriage) Bolt Holes

Bore	OD (L & C)	Width	Width (IR)
1.030"	4.750"	1.37"	1.50"
26.16 mm	120.65	34.80 mm	38.18 mm



ST491A

Round Bore – Type 1 – Round Bolt Holes

Bore	OD (L & C)	Width	Width (IR)
1.7716"	5.000"	1.6535"	1.685"
45 mm	127 mm	42 mm	42.8 mm

Interchange

491A	Fafnir
DHU 1 3/4R-209	Fafnir
FD209RA	BCA
FD209RJA	NTN



ST491B

Round Bore – Type 1 – Rectangular Carriage Bolt Holes

Bore	OD (L & C)	Bolt Hole Circle, C	Width	Width (IR)
1.5299"	5.000"	5.000"	1.6535"	1.685"
38.86 mm	127 mm	127 mm	42 mm	42.8 mm

Interchange

DHU1 1/2 R-209	Fafnir
FD208RB	BCA
FD209RE	NTN



Agricultural Specials

FD209 X 1 1/4 SQ

Square Bore – Type 1 – Rectangular Carriage Bolt Holes

Bore	OD (L)	Bolt Hole Circle, C	Width	Width (IR)
1.299"	5.000"	5.000"	1.685"	1.685"
33 mm	127 mm	127 mm	42.8 mm	42.8 mm

Bolt Hole Dimensions: 0.687" x 0.53" (rectangular hole)

Interchange

DHU 1 1/4S-209	Fafnir
FD209-1 1/4SQ	Peer
FD209RK	BCA

FD211 X 1 1/2

Square Bore – Type 1 – Rectangular Carriage Bolt Holes

Bore	OD (L)	Bolt Hole Circle	Width	Width (IR)
1.530"	5.500"	5.500"	1.83"	2.00"
38.862 mm	139.7 mm	139.7 mm	46.482 mm	50.8 mm

Bolt Hole Dimensions: 0.531" x 0.5944" (rectangular hole)

Interchange

DHU 1 1/2S-211	Fafnir
FD211-1 1/2SQ	Peer
FD211RD	BCA

ST211-1 3/4

Round Bore – Type 1 – Round Bolt Holes

Bore	OD (L)	Bolt Hole Circle	Width	Width (IR)
1.7812"	5.500"	5.500"	1.79"	2.187"
45.242 mm	139.7 mm	139.7 mm	45.5 mm	55.5 mm

Interchange

DHU 1 3/4R-211	Fafnir
FD211RE	BCA/NTN
FD211-1 3/4RD	Peer
ST3028	IHC



Agricultural Specials

ST211-2 3/16

Round Bore – Type 1 – Round Bolt Holes

Bore	OD (L)	Bolt Hole Circle	Width	Width (IR)
2.200"	5.500"	5.500"	1.799"	2.187"
55.88 mm	139.7 mm	139.7 mm	45.7 mm	55.5 mm

Interchange

DHU 2 3/16R-211	Fafnir
FD211RB	BCA/NTN
FD211-2 3/16RD	Peer
ST740B	IHC

ABT30941

Disc Bearing Replacement Kit for John Deere

Kit: Pressed Flange, 1.75 Bore Bearing, Gasket & Bolts for assembly

- Heavy duty, metal-backed triple lip seals
- Heavy gauge, heat-treated, zinc-plated stampings
- All steel grease fittings
- Includes bearing, flanges gasket, four bolts and nuts
- Grade 5 plated carriage bolt and nut assembly

Part No	Replaces	Bore
30941	AA30941	1-3/4"

Application

John Deere models 210, 215, 220, 230, 235, 621, 630

Interchange

ST209 1 3/4 Kit



Chain

C2060H X 10FT W/D5-1/2

Citrus Chain – C2060H with D5-1/2 every 2nd Pitch
D5 Attachment 1/2 x 1 5/8

Application

Citrus Processing
Food Processing
Conveyors



Agricultural Specials

PART NO	REPLACES	APPLICATION	BORE	WT.
GW208PPB5	DS208TTR5	Amco G10272, Deere A20175	1-1/8" Square	1.43
GW208PPB8	DS208TTR8	Amco G10333, Ford SBP238481B, Kewanee B2151, NH SBP238481B, Taylorway 207359, Oliver/White SBP238481B	1-1/8" Square	1.54
GW209PPB4	DS209TTR4	Glencoe, Some Models of Crustbuster, Case-IH, Ford, DMI 21842400, Krause 612-10-2, Landoll 1065100003, Sunflower 1829	1.535 Round	1.47
GW209PPB5	DS209TTR5	Taylorway, Calkins 5449031, M.F. 842323M1	1-1/4" Square	1.69
GW209PPB8	DS209TTR8	Case, IH, Midland, Lilliston, Midland 15620	1-1/4" Square	1.61
GW209PPB10	DS209TTR10	Deere 210, 220, & 230 Disc, Deere A20649	1-3/4" Round	1.28
GW210PPB2	DS210TTR2	Amco G10771, Case T53781	1-15/16" Round	1.42
GW210PP4	DC210TTR4	Amco G10446, Amco G10778	1-1/8" Square	2.05
GW210PPB4	DS210TTR4	Krause, Kewanee B2246	1-1/8" Square	2.05
GW210PPB5	DS210TTR5	Some Models Case, Krause	1.785 Round	2.00
GW211PP2	DC211TTR2	Lilliston, Bush-Hog 14-6-244, Kewanee G1046244		
GW211PPB2	DS211TTR2	Hiniker, Some Deere, Case T57559, Wilrich 24022	2-13/16" Round	2.22
GW211PP3	DC211TTR3	Athens, Greenline, Amco G11071, Bush-Hog 14-6-430, Kewanee G1046430	1-1/2" Square	2.50
GW211PPB3	DS211TTR3	Athens, Amco G10906, Burch 8672A, Case T51610, Long 9-92088, M.F. 449432M1, White 237909B	1-1/2" Square	2.50
GW211PPB13	DS211TTR13	Sunflower Offset Disc, Sunflower 2042	1-3/4" Round	2.21
GW211PP27	DS211TTR27	Some Model of DIS & Hipper G, Amco G12233	1-1/2" Square	2.98
P100104	100104	SPECIAL WASHER FOR GW211PP27 BEARING		0.10
GW211PP17	11503	AMCO F12, F15, F17 & F41 1-1/2 SQ. BORE	1-1/2" Square	3.00
GW211PP25	DS211TTR21	SUNFLOWER, CHISELS, SOIL CONTAINER	1-3/4" Round	3.00