

Ball Thrust Bearing

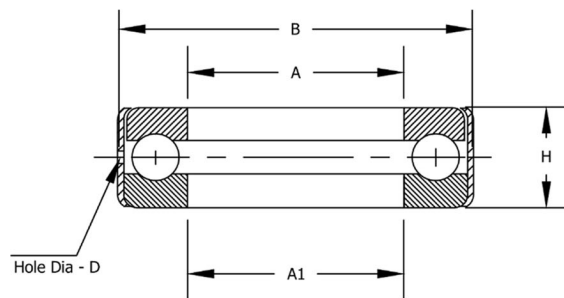
Inch Dimensions

Flat Seat

Single Acting

Grooved Races

Banded



Bearing Designation	A +.002 -.000	A ¹ +.010 -.010	B +.000 -.003	H +.005 -.005	BALLS		LOAD RATING (lbs.)		SPEED LIMIT	BEARING WEIGHT Lbs.
					No.	SIZE	Static	Dynamic		
B1	.503	.531	1.219	.625	10	1/4	3993	775	3650	.130
B2	.566	.594	1.219	.625	10	1/4	3993	775	3650	.126
B3	.628	.656	1.344	.625	12	1/4	4792	829	3500	.156
B4	.691	.719	1.344	.625	12	1/4	4792	829	3500	.142
B5	.753	.781	1.469	.625	13	1/4	5191	855	3350	.164
B6	.816	.844	1.469	.625	13	1/4	5191	855	3350	.157
B7	.878	.906	1.844	.750	14	5/16	8736	1317	2750	.342
B8	.941	.969	1.844	.750	14	5/16	8736	1317	2750	.319
B9	1.003	1.031	1.969	.750	12	3/8	10778	1722	2700	.361
B10	1.066	1.094	1.969	.750	12	3/8	10778	1722	2700	.342
B11	1.128	1.156	2.094	.750	13	3/8	11677	1774	2500	.400
B12	1.191	1.219	2.094	.750	13	3/8	11677	1774	2500	.380
B13	1.253	1.281	2.344	.750	15	3/8	13473	1779	2350	.494
B14	1.316	1.344	2.344	.750	15	3/8	13473	1779	2350	.480
B15	1.378	1.406	2.469	.750	16	3/8	14371	1912	2300	.525
B16	1.441	1.469	2.469	.750	16	3/8	14371	1912	2300	.513
B17	1.503	1.531	2.594	.750	17	3/8	15269	1958	2275	.562
B18	1.566	1.594	2.594	.750	17	3/8	15269	1958	2275	.544
B19	1.628	1.656	2.969	.875	16	7/16	19570	2527	1950	.900
B20	1.691	1.719	2.969	.875	16	7/16	19570	2527	1950	.875
B21	1.753	1.781	3.094	.875	17	7/16	20793	2580	1900	.969
B22	1.816	1.844	3.09	.875	17	7/16	20793	2580	1900	.925
B23	1.878	1.906	3.219	.875	18	7/16	22016	2646	1850	1.013
B24	1.941	1.969	3.219	.875	18	7/16	22016	2646	1850	.963
B25	2.003	2.031	3.344	.875	19	7/16	23239	2701	1825	1.670



Materials: Rings and balls are constructed of thru-hardened 52100 steel. Band is constructed of high quality low carbon steel.

Bearings are supplied with light oil lubrication. Grease lubrication is available upon request and subject to minimums and production lead times.

US Corporate Headquarters:
2100 Pacific Street
Hauppauge NY, 11788
www.tritanpt.com



Exclusively Distributed by:



888-4-Bearings