

Cam Followers (also known as track rollers) are designed with a thick outer ring to run directly in a track. The design permits high-load carrying capacity while minimizing distortion / bending. Stud type Cam Followers utilize needle rollers in a full complement configuration (no cage) to maximize load capacity and are designed for overhung or cantilever mounting. They are supplied fully lubricated with a high quality multipurpose grease, but are also relubricatable through a radial hole in the stem of the stud or through either end of the end of the stud.



Seals (suffix S) utilizing internal thrust washers extend service life in dusty environments or in conditions of infrequent re-lubrication.

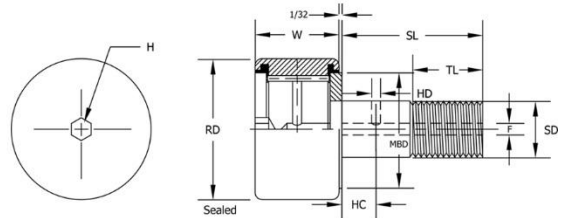
TRITAN Cam Followers are supplied with a black oxide finish to prevent corrosion, and a hexagonal wrench socket (suffix B) in the head of the stud that facilitates easy mounting, especially in situations in blind holes or when greater than average thread torque is required.



Cam Followers are commonly used in industrial applications such as: Material handling equipment, ram support rollers, and indexing equipment

CF-SB Series

- Full Complement
- Hex Socket
- Sealed
- Black Oxide Finish

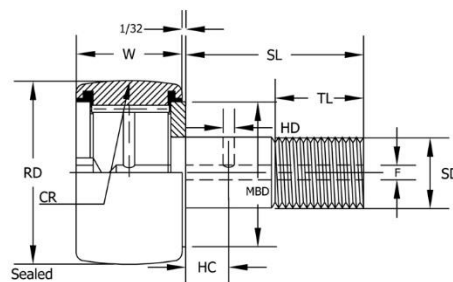
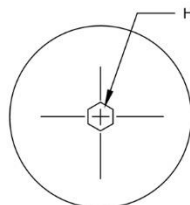


BEARING NUMBER	ROLLER DIA. (RD) + .000 - .001	ROLLER WIDTH (W) + .000 - .005	STUD DIA. (SD) + .001 - .000	STUD L'GTH (SL)	MINIMUM PERFECT THR'D L'GTH (TL)	FINE THR'D'S	OIL HOLE			MIN. BOSS DIA.	MAX STATIC CAPACITY LBS.	BASIC DYNAMIC RATING LBS.
							HOLE CENTER (HC)	HOLE DIA. (HD)	LUB FITTING SIZE (F)			
CF 1/2SB	.5000	.3750	.1900	5/8	1/4	10-32 UNF	-	-	-	19/64	790	680
CF 9/16SB	.5625	.3750	.1900	5/8	1/4	10-32 UNF	-	-	-	19/64	790	680
CF 5/8SB	.6250	.4375	.2500	3/4	5/16	1/4-28 UNF	-	-	-	23/64	1215	955
CF 11/16SB	.6875	.4375	.2500	3/4	5/16	1/4-28 UNF	-	-	-	23/64	1215	955
CF 3/4SB	.7500	.5000	.3750	7/8	3/8	3/8-24 UNF	1/4	3/32	3/16	1/2	2065	1660
CF 7/8SB	.8750	.5000	.3750	7/8	3/8	3/8-24 UNF	1/4	3/32	3/16	1/2	2065	1660
CF 1SB	1.000	.6250	.4375	1	1/2	7/16-20 UNF	1/4	3/32	3/16	41/64	3060	2225
CF 1 1/8SB	1.125	.6250	.4375	1	1/2	7/16-20 UNF	1/4	3/32	3/16	41/64	3060	2225
CF 1 1/4SB	1.250	.7500	.5000	1 1/4	5/8	1/2-20 UNF	5/16	3/32	3/16	49/64	4250	3930
CF 1 3/8SB	1.375	.7500	.5000	1 1/4	5/8	1/2-20 UNF	5/16	3/32	3/16	49/64	4250	3930
CF 1 1/2SB	1.500	.8750	.6250	1 1/2	3/4	5/8-18 UNF	3/8	3/32	3/16	57/64	5640	4840
CF 1 5/8SB	1.625	.8750	.6250	1 1/2	3/4	5/8-18 UNF	3/8	3/32	3/16	57/64	5640	4840
CF 1 3/4SB	1.750	1.000	.7500	1 3/4	7/8	3/4-16 UNF	7/16	3/32	3/16	1 3/64	7920	6385
CF 1 7/8SB	1.875	1.000	.7500	1 3/4	7/8	3/4-16 UNF	7/16	3/32	3/16	1 3/64	7920	6385
CF 2SB	2.000	1.250	.8750	2	1	7/8-14 UNF	1/2	1/8	3/16	1 13/64	10570	8090
CF 2 1/4SB	2.250	1.250	.8750	2	1	7/8-14 UNF	1/2	1/8	3/16	1 13/64	10570	8090
CF 2 1/2SB	2.500	1.500	1.000	2 1/4	1 1/8	1-14 UNF	9/16	1/8	3/16	1 5/16	16450	11720
CF 2 3/4SB	2.750	1.500	1.000	2 1/4	1 1/8	1-14 UNF	9/16	1/8	3/16	1 5/16	16450	11720
CF 3SB	3.000	1.750	1.250	2 1/2	1 1/4	1 1/4-12 UNF	5/8	1/8	1/4 *	1 3/4	24910	15720
CF 3 1/4SB	3.250	1.750	1.250	2 1/2	1 1/4	1 1/4-12 UNF	5/8	1/8	1/4 *	1 3/4	24910	15720
CF 3 1/2SB	3.500	2.000	1.375	2 3/4	1 3/8	1 3/8-12 UNF	11/16	1/8	1/4 *	1 59/64	31625	22800
CF 4SB	4.000	2.250	1.500	3 1/2	1 1/2	1 1/2-12 UNF	3/4	1/8	1/4 *	2 9/32	44770	29985

S=Sealed. B=Hex Head. Also available with screw driver slot head (no suffix), & non sealed (leave off "S" suffix) by request, subject to minimum quantities and factory lead time

CCF-SB Series

- Full Complement
- Crowned O.D
- Hex Socket
- Sealed
- Black Oxide Finish

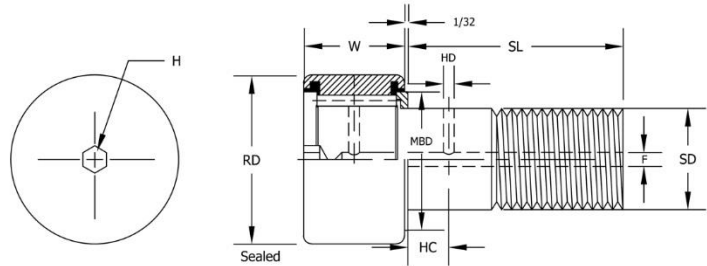


BEARING NUMBER	ROLLER DIA. (RD) +.000 -.001	ROLLER WIDTH (W) +.000 -.005	STUD DIA. (SD) +.001 -.000	STUD L'GTH (SL)	MINIMUM PERFECT THR'D. L'GTH. (TL)	FINE THR'D'S	OIL HOLE		LUB FITTING SIZE (F)	MIN. BOSS DIA.	HOUSING BORE DIA. +.0002 -.0003	RECOM. CLAMPING TORQUE POUND-INCHES	MAX STATIC CAPACITY LBS.	BASIC DYNAMIC RATING LBS.
							HOLE CENTER (HC)	HOLE DIA. (HD)						
CCF 1/2SB	.5000	.3750	.1900	5/8	1/4	10-32 UNF	-	-	-	19/64	.1903	15	790	680
CCF 9/16SB	.5625	.3750	.1900	5/8	1/4	10-32 UNF	-	-	-	19/64	.1903	15	790	680
CCF 5/8SB	.6250	.4375	.2500	3/4	5/16	1/4-28 UNF	-	-	-	23/64	.2503	35	1215	955
CCF 11/16SB	.6875	.4375	.2500	3/4	5/16	1/4-28 UNF	-	-	-	23/64	.2503	35	1215	955
CCF 3/4SB	.7500	.5000	.3750	7/8	3/8	3/8-24 UNF	1/4	3/32	3/16	1/2	.3753	95	2065	1660
CCF 7/8SB	.8750	.5000	.3750	7/8	3/8	3/8-24 UNF	1/4	3/32	3/16	1/2	.3753	95	2065	1660
CCF 1SB	1.000	.6250	.4375	1	1/2	7/16-20 UNF	1/4	3/32	3/16	41/64	.4378	250	3060	2225
CCF 1 1/8SB	1.125	.6250	.4375	1	1/2	7/16-20 UNF	1/4	3/32	3/16	41/64	.4378	250	3060	2225
CCF 1 1/4SB	1.250	.7500	.5000	1 1/4	5/8	1/2-20 UNF	5/16	3/32	3/16	49/64	.5003	350	4250	3930
CCF 1 3/8SB	1.375	.7500	.5000	1 1/4	5/8	1/2-20 UNF	5/16	3/32	3/16	49/64	.5003	350	4250	3930
CCF 1 1/2SB	1.500	.8750	.6250	1 1/2	3/4	5/8-18 UNF	3/8	3/32	3/16	57/64	.6253	650	5640	4840
CCF 1 5/8SB	1.625	.8750	.6250	1 1/2	3/4	5/8-18 UNF	3/8	3/32	3/16	57/64	.6253	650	5640	4840
CCF 1 3/4SB	1.750	1.000	.7500	1 3/4	7/8	3/4-16 UNF	7/16	3/32	3/16	1 3/64	.7503	1250	7920	6385
CCF 1 7/8SB	1.875	1.000	.7500	1 3/4	7/8	3/4-16 UNF	7/16	3/32	3/16	1 3/64	.7503	1250	7920	6385
CCF 2SB	2.000	1.250	.8750	2	1	7/8-14 UNF	1/2	1/8	3/16	1 13/64	.8753	1500	10570	8090
CCF 2 1/4SB	2.250	1.250	.8750	2	1	7/8-14 UNF	1/2	1/8	3/16	1 13/64	.8753	1500	10570	8090
CCF 2 1/2SB	2.500	1.500	1.000	2 1/4	1 1/8	1-14 UNF	9/16	1/8	3/16	1 5/16	1.0003	2250	16450	11720
CCF 2 3/4SB	2.750	1.500	1.000	2 1/4	1 1/8	1-14 UNF	9/16	1/8	3/16	1 5/16	1.0003	2250	16450	11720
CCF 3SB	3.000	1.750	1.250	2 1/2	1 1/4	1 1/4-12 UNF	5/8	1/8	1/4 *	1 1/34	1.2503	3450	24910	15720
CCF 3 1/4SB	3.250	1.750	1.250	2 1/2	1 1/4	1 1/4-12 UNF	5/8	1/8	1/4 *	1 1/34	1.2503	3450	24910	15720
CCF 3 1/2SB	3.500	2.000	1.375	2 3/4	1 3/8	1 3/8-12 UNF	11/16	1/8	1/4 *	1 59/64	1.3753	4200	31625	22800
CCF 4SB	4.000	2.250	1.500	3 1/2	1 1/2	1 1/2-12 UNF	3/4	1/8	1/4 *	2 9/32	1.5003	5000	44770	29985

S=Sealed. B=Hex Head. Also available with screw driver slot head (no suffix), & non sealed (leave off "S" suffix) by request, subject to minimum quantities and factory lead time

CFH-SB Series

- Full Complement
- Heavy Stud
- Hex Socket
- Sealed
- Black Oxide Finish

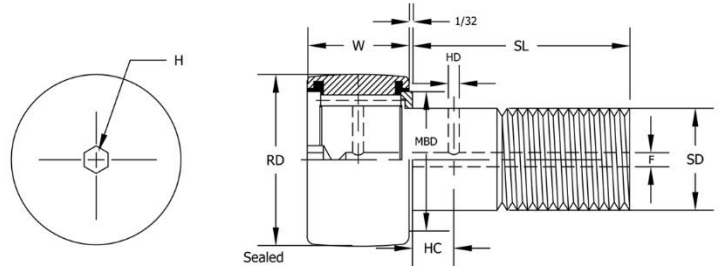


BEARING NUMBER	ROLLER DIA. (RD) + .000 - .001	ROLLER WIDTH (W) + .000 - .005	STUD DIA. (SD) + .001 - .000	STUD L'GTH (SL)	MINIMUM PERFECT THR'D. L'GTH. (TL)	FINE THR'D'S	OIL HOLE		LUB FITTING SIZE (F)	MIN. BOSS DIA.	HOUSING BORE DIA. +.0002 -.0003	RECOM. CLAMPING TORQUE POUND-INCHES	MAX STATIC CAPACITY LBS.	BASIC DYNAMIC RATING LBS.
							HOLE CENTER (HC)	HOLE DIA. (HD)						
CFH 1/2SB	.5000	.3750	.2500	5/8	1/4	1/4-28 UNF	-	-	-	13/32	.2503	35	1580	680
CFH 9/16SB	.5625	.3750	.2500	5/8	1/4	1/4-28 UNF	-	-	-	13/32	.2503	35	1580	680
CFH 5/8SB	.6250	.4375	.3125	3/4	5/16	5/16-24 UNF	-	-	-	15/32	.3128	90	2480	955
CFH 11/16SB	.6875	.4375	.3125	3/4	5/16	5/16-24 UNF	-	-	-	15-32	.3125	90	2480	955
CFH 3/4SB	.7500	.5000	.4375	7/8	3/8	7/16-20 UNF	1/4	3/32	3/16	39/64	.4378	250	4130	1660
CFH 7/8SB	.8750	.5000	.4375	7/8	3/8	7/16-20 UNF	1/4	3/32	3/16	39/64	.4378	250	4130	1660
CFH 1SB	1.000	.6250	.6250	1	1/2	5/8-18 UNF	1/4	3/32	3/16	25/32	.6253	650	6120	2225
CFH 1 1/8SB	1.125	.6250	.6250	1	1/2	5/8-18 UNF	1/4	3/32	3/16	25/32	.6253	650	6120	2225
CFH 1 1/4SB	1.250	.7500	.7500	1 1/4	5/8	3/4-16 UNF	5/16	3/32	3/16	63/64	.7503	1250	8500	3930
CFH 1 3/8SB	1.375	.7500	.7500	1 1/4	5/8	3/4-16 UNF	5/16	3/32	3/16	63/64	.7503	1250	8500	3930
CFH 1 1/2SB	1.500	.8750	.8750	1 1/2	3/4	7/8-14 UNF	3/8	3/32	3/16	1 3/32	.8753	1500	11280	4840
CFH 1 5/8SB	1.6250	.8750	.8750	1 1/2	3/4	7/8-14 UNF	3/8	3/32	3/16	1 3/32	.8753	1500	11280	4840
CFH 1 3/4SB	1.750	1.000	1.000	1 3/4	7/8	1-14 UNF	7/16	3/32	3/16	1 1/4	1.0003	2250	15840	6385
CFH 1 7/8SB	1.875	1.000	1.000	1 3/4	7/8	1-14 UNF	7/16	3/32	3/16	1 1/4	1.0003	2250	15840	6385
CFH 2SB	2.000	1.250	1.125	2	1	1 1/8-12 UNF	1/2	1/8	3/16	1 13/32	1.1253	2800	21140	8090
CFH 2 1/4SB	2.250	1.250	1.125	2	1	1 1/8-12 UNF	1/2	1/8	3/16	1 13/32	1.1253	2800	21140	8090
CFH 2 1/2SB	2.500	1.500	1.250	2 1/4	1 1/8	1 1/4-12 UNF	9/16	1/8	3/16	1 11/16	1.2503	3450	32900	11720
CFH 2 3/4SB	2.750	1.500	1.250	2 1/4	1 1/8	1 1/4-12 UNF	9/16	1/8	3/16	1 11/16	1.2503	3450	32900	11720
CFH 3SB	3.000	1.750	1.500	2 1/2	1 1/4	1 1/2-12 UNF	5/8	1/8	1/4 *	2 1/8	1.5003	5000	49820	15720
CFH 3 1/4SB	3.250	1.750	1.500	2 1/2	1 1/4	1 1/2-12 UNF	5/8	1/8	1/4 *	2 1/8	1.5003	5000	49820	15720
CFH 3 1/2SB	3.500	2.000	1.750	2 3/4	1 3/8	1 3/4-12 UNF	11/16	1/8	1/4 *	2 7/16	1.7503	5000	63250	22800
CFH 4SB	4.000	2.250	2.000	3 1/2	1 1/2	2-12 UNF	3/4	1/8	1/4 *	2 51/64	2.0003	5000	89540	29985

S=Sealed. B=Hex Head. Also available with screw driver slot head (no suffix), & non sealed (leave off "S" suffix) by request, subject to minimum quantities and factory lead time

CCFH SB Series

- Full Complement
- Heavy Stud
- Crowned O.D
- Hex Socket
- Black Oxide Finish

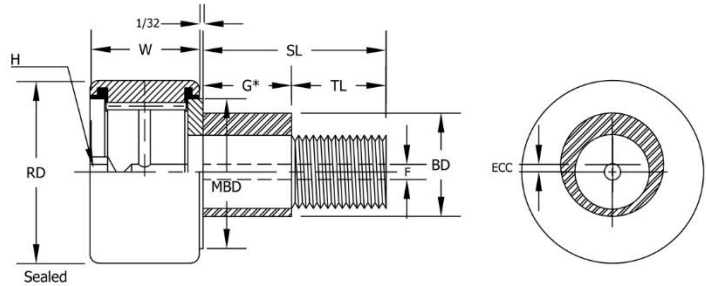


BEARING NUMBER	ROLLER DIA. (RD) + .000 - .001	ROLLER WIDTH (W) + .000 - .005	STUD DIA. (SD) + .001 - .000	STUD L'GTH (SL)	MINIMUM PERFECT THR'D. L'GTH. (TL)	FINE THR'D'S	OIL HOLE		LUB FITTING SIZE (F)	MIN. BOSS DIA.	HOUSING BORE DIA. + .0002 - .0003	RECOM. CLAMPING TORQUE POUND-INCHES	MAX STATIC CAPACITY LBS.	BASIC DYNAMIC RATING LBS.
							HOLE CENTER (HC)	HOLE DIA. (HD)						
CCFH 1/2SB	.5000	.3750	.2500	5/8	1/4	1/4-28 UNF	-	-	-	13/32	.2503	35	1580	680
CCFH 9/16SB	.5625	.3750	.2500	5/8	1/4	1/4-28 UNF	-	-	-	13/32	.2503	35	1580	680
CCFH 5/8SB	.6250	.4375	.3125	3/4	5/16	5/16-24 UNF	-	-	-	15/32	.3128	90	2480	955
CCFH 11/16SB	.6875	.4375	.3125	3/4	5/16	5/16-24 UNF	-	-	-	15-32	.3125	90	2480	955
CCFH 3/4SB	.7500	.5000	.4375	7/8	3/8	7/16-20 UNF	1/4	3/32	3/16	39/64	.4378	250	4130	1660
CCFH 7/8SB	.8750	.5000	.4375	7/8	3/8	7/16-20 UNF	1/4	3/32	3/16	39/64	.4378	250	4130	1660
CCFH 1SB	1.000	.6250	.6250	1	1/2	5/8-18 UNF	1/4	3/32	3/16	25/32	.6253	650	6120	2225
CCFH 1 1/8SB	1.125	.6250	.6250	1	1/2	5/8-18 UNF	1/4	3/32	3/16	25/32	.6253	650	6120	2225
CCFH 1 1/4SB	1.250	.7500	.7500	1 1/4	5/8	3/4-16 UNF	5/16	3/32	3/16	63/64	.7503	1250	8500	3930
CCFH 1 3/8SB	1.375	.7500	.7500	1 1/4	5/8	3/4-16 UNF	5/16	3/32	3/16	63/64	.7503	1250	8500	3930
CCFH 1 1/2SB	1.500	.8750	.8750	1 1/2	3/4	7/8-14 UNF	3/8	3/32	3/16	1 3/32	.8753	1500	11280	4840
CCFH 1 5/8SB	1.6250	.8750	.8750	1 1/2	3/4	7/8-14 UNF	3/8	3/32	3/16	1 3/32	.8753	1500	11280	4840
CCFH 1 3/4SB	1.750	1.000	1.000	1 3/4	7/8	1-14 UNF	7/16	3/32	3/16	1 1/4	1.0003	2250	15840	6385
CCFH 1 7/8SB	1.875	1.000	1.000	1 3/4	7/8	1-14 UNF	7/16	3/32	3/16	1 1/4	1.0003	2250	15840	6385
CCFH 2SB	2.000	1.250	1.125	2	1	1 1/8-12 UNF	1/2	1/8	3/16	1 13/32	1.1253	2800	21140	8090
CCFH 2 1/4SB	2.250	1.250	1.125	2	1	1 1/8-12 UNF	1/2	1/8	3/16	1 13/32	1.1253	2800	21140	8090
CCFH 2 1/2SB	2.500	1.500	1.250	2 1/4	1 1/8	1 1/4-12 UNF	9/16	1/8	3/16	1 11/16	1.2503	3450	32900	11720
CCFH 2 3/4SB	2.750	1.500	1.250	2 1/4	1 1/8	1 1/4-12 UNF	9/16	1/8	3/16	1 11/16	1.2503	3450	32900	11720
CCFH 3SB	3.000	1.750	1.500	2 1/2	1 1/4	1 1/2-12 UNF	5/8	1/8	1/4 *	2 1/8	1.5003	5000	49820	15720
CCFH 3 1/4SB	3.250	1.750	1.500	2 1/2	1 1/4	1 1/2-12 UNF	5/8	1/8	1/4 *	2 1/8	1.5003	5000	49820	15720
CCFH 3 1/2SB	3.500	2.000	1.750	2 3/4	1 3/8	1 3/4-12 UNF	11/16	1/8	1/4 *	2 7/16	1.7503	5000	63250	22800
CCFH 4SB	4.000	2.250	2.000	3 1/2	1 1/2	2-12 UNF	3/4	1/8	1/4 *	2 51/64	2.0003	5000	89540	29985

S=Sealed. B=Hex Head. Also available with screw driver slot head (no suffix), & non sealed (leave off "S" suffix) by request, subject to minimum quantities and factory lead time

CFE-SB Series

- Full Complement
- Eccentric Stud
- Hex Socket
- Sealed
- Black Oxide Finish



BEARING NUMBER	ROLLER DIA. (RD) + .000 - .001	ROLLER WIDTH (W) + .000 - .005	BUSHING L'GTH (G*) + .000 - .010	BUSHING DIA. (B.D.) ± .001	STUD L'GTH (SL)	MINIMUM PERFECT THR'D L'GTH. (TL)	FINE THR'D'S	ECC.	LUB. FITTING SIZE (F)	RECOM. CLAMPING TORQUE POUND-INCHES	MAX STATIC CAPACITY LBS.	BASIC DYNAMIC RATING LBS.
CFE 1/2SB	.5000	.3750	.3750	.2500	5/8	1/4	10-32 UNF	.010	-	15	790	680
CFE 9/16SB	.5625	.3750	.3750	.2500	5/8	1/4	10-32 UNF	0.10	-	15	790	680
CFE 5/8SB	.6250	.4375	.4370	.3750	3/4	5/16	1/4-28 UNF	.015	-	35	1215	955
CFE 11/16SB	.6875	.4375	.4370	.3750	3/4	5/16	1/4-28 UNF	.015	-	35	1215	955
CFE 3/4SB	.7500	.5000	.5000	.5000	7/8	3/8	3/8-24 UNF	.015	3/16	95	2065	1660
CFE 7/8SB	.8750	.5000	.5000	.5000	7/8	3/8	3/8-24 UNF	.015	3/16	95	2065	1660
CFE 1SB	1.000	.6250	.5000	.6250	1	1/2	7/16-20 UNF	.030	3/16	250	3060	2225
CFE 1 1/8SB	1.125	.6250	.5000	.6250	1	1/2	7/16-20 UNF	.030	3/16	250	3060	2225
CFE 1 1/4SB	1.250	.7500	.6250	.6870	1 1/4	5/8	1/2-20 UNF	.030	3/16	350	4250	3930
CFE 1 3/8SB	1.375	.7500	.6250	.6870	1 1/4	5/8	1/2-20 UNF	.030	3/16	350	4250	3930
CFE 1 1/2SB	1.500	.8750	.7500	.8750	1 1/2	3/4	5/8-18 UNF	.030	3/16	650	5640	4840
CFE 1 5/8SB	1.625	.8750	.7500	.8750	1 1/2	3/4	5/8-18 UNF	.030	3/16	650	5640	4840
CFE 1 3/4SB	1.750	1.000	.8750	1.000	1 3/4	7/8	3/4-16 UNF	.030	3/16	1250	7920	6385
CFE 1 7/8SB	1.875	1.000	.8750	1.000	1 3/4	7/8	3/4-16 UNF	.030	3/16	1250	7920	6385
CFE 2SB	2.000	1.250	1.000	1.187	2	1	7/8-14 UNF	.030	3/16	1500	10570	8090
CFE 2 1/4SB	2.250	1.250	1.000	1.187	2	1	7/8-14 UNF	.030	3/16	1500	10570	8090
CFE 2 1/2SB	2.500	1.500	1.125	1.375	2 1/4	1 1/8	1-14 UNF	.030	3/16	2250	16450	11720
CFE 2 3/4SB	2.750	1.500	1.250	1.375	2 1/4	1 1/8	1-14 UNF	.030	3/16	2250	16450	11720
CFE 3SB	3.000	1.750	1.250	1.750	2 1/2	1 1/4	1 1/4-12 UNF	.060	* 1/4	3450	24910	15720
CFE 3 1/4SB	3.250	1.750	1.250	1.750	2 1/2	1 1/4	1 1/4-12 UNF	.060	* 1/4	3450	24910	15720
CFE 3 1/2SB	3.500	2.000	1.375	1.182	2 3/4	1 3/8	1 3/8-12 UNF	.060	* 1/4	4200	31625	22800
CFE 4SB	4.000	2.250	2.000	2.000	3 1/2	1 1/2	1 1/2-12 UNF	.060	* 1/4	5000	44770	29985

S=Sealed. B=Hex Head. Also available with screw driver slot head (no suffix), & non sealed (leave off "S" suffix) by request, subject to minimum quantities and factory lead time



Interchange Information

Sealed with HEX HEAD

TRITAN #	RBC	SMITH	CARTER	KOYO	IKO
CF 1/2SB	S16LW	CR-1/2-XB	CNB-16-SB	CRSB-8-1	CR 8-1 VBUU
CF 5/8SB	S20LW	CR-5/8-XB	CNB-20-SB	CRSB-10-1	CR 10-1 VBUU
CF 3/4SB	S24LW	CR-3/4-XB	CNB-24-SB	CRSB-12	CR 12 VBUU
CF 7/8SB	S28LW	CR-7/8-XB	CNB-28-SB	CRSB-14	CR 14 VBUU
CF 1SB	S32LW	CR-1-XB	CNB-32-SB	CRSB-16	CR 16 VBUU
CF 1 1/8SB	S36LW	CR-1 1/8-XB	CNB-36-SB	CRSB-18	CR 18 VBUU
CF 1 1/4SB	S40LW	CR-1 1/4-XB	CNB-40-SB	CRSB-20	
CF 1 3/8SB	S44LW	CR-1 3/8-XB	CNB-44-SB	CRSB-22	CR 22 VBUU
CF 1 1/2SB	S48LW	CR-1 1/2-XB	CNB-48-SB	CRSB-24	CR 24 VBUU
CF 1 5/8SB	S52LW	CR-1 5/8-XB	CNB-52-SB	CRSB-26	CR 26 VBUU
CF 1 3/4SB	S56LW	CR-1 3/4-XB	CNB-56-SB	CRSB-28	CR 28 VBUU
CF 1 7/8SB	S60LW	CR-1 7/8-XB	CNB-60-SB	CRSB-30	CR 30 VBUU
CF 2SB	S64LW	CR-2-XB	CNB-64-SB	CRSB-32	CR 32 VBUU
CF 2 1/4SB	S72LW	CR-2 1/4-XB	CNB-72-SB	CRSB-36	CR 36 VBUU
CF 2 1/2SB	S80LW	CR-2 1/2-XB	CNB-80-SB	CRSB-40	CR 40 VBUU
CF 2 3/4SB	S88LW	CR-2 3/4-XB	CNB-88-SB	CRSB-44	CR 44 VBUU
CF 3SB	S96LW	CR-3-XB	CNB-96-SB	CRSB-48	CR 48 VBUU
CF 3 1/4SB	S104LW	CR-3 1/4-XB	CNB-104-SB	CRSB-52	CR 52 VBUU
CF 3 1/2SB	S112LW	CR-3 1/2-XB	CNB-112-SB	CRSB-56	CR 56 VBUU
CF 4SB	S128LW	CR-4-XB	CNB-128-SB	CRSB-64	CR 64 VBUU
CF 5SB	S160LW	CR-5-XB	CNB-160-SB	CRSB-80	
CF 6SB	S192LW	CR-6-XB	CNB-192-SB	CRSB-96	
CF 7SB				CRSB-112	

Heavy - Sealed with HEX HEAD

TRITAN #	RBC	SMITH	CARTER	KOYO	IKO
CFH 1/2SB	H16LW	HR-1/2-XB	CNBH-16-SB	CRHSB-8-1	CRH 8-1 VBUU
CFH 5/8SB	H20LW	HR-5/8-XB	CNBH-20-SB	CRHSB-10-1	CRH 10-1 VBUU
CFH 3/4SB	H24LW	HR-3/4-XB	CNBH-24-SB	CRHSB-12	CRH 12 VBUU
CFH 7/8SB	H28LW	HR-7/8-XB	CNBH-28-SB	CRHSB-14	CRH 14 VBUU
CFH 1SB	H32LW	HR-1-XB	CNBH-32-SB	CRHSB-16	CRH 16 VBUU
CFH 1 1/8SB	H36LW	HR-1 1/8-XB	CNBH-36-SB	CRHSB-18	CRH 18 VBUU
CFH 1 1/4SB	H40LW	HR-1 1/4-XB	CNBH-40-SB	CRHSB-20	
CFH 1 3/8SB	H44LW	HR-1 3/8-XB	CNBH-44-SB	CRHSB-22	CRH 22 VBUU
CFH 1 1/2SB	H48LW	HR-1 1/2-XB	CNBH-48-SB	CRHSB-24	CRH 24 VBUU
CFH 1 5/8SB	H52LW	HR-1 5/8-XB	CNBH-52-SB	CRHSB-26	CRH 26 VBUU
CFH 1 3/4SB	H56LW	HR-1 3/4-XB	CNBH-56-SB	CRHSB-28	CRH 28 VBUU
CFH 1 7/8SB	H60LW	HR-1 7/8-XB	CNBH-60-SB	CRHSB-30	CRH 30 VBUU
CFH 2SB	H64LW	HR-2-XB	CNBH-64-SB	CRHSB-32	CRH 32 VBUU
CFH 2 1/4SB	H72LW	HR-2 1/4-XB	CNBH-72-SB	CRHSB-36	CRH 36 VBUU
CFH 2 1/2SB	H80LW	HR-2 1/2-XB	CNBH-80-SB	CRHSB-40	CRH 40 VBUU

Interchange is to be used as a guide only. All efforts have been made to assure the accuracy of the data. Consult one of our sales professionals for assistance in comparing dimensions critical for specific applications.

Northeast
Hauppauge, NY
1 (800) 645-5088

Southeast
Atlanta, GA
1 (800) 247-9920

Midwest
Chicago, IL
1 (800) 325-9696

Southwest
Columbus, OH
1 (888) 700-9144

Southwest
Houston, TX
1 (800) 233-5567

West Coast
Dallas, TX
1 (800) 500-1015

West Coast
Los Angeles, CA
1 (800) 722-0655