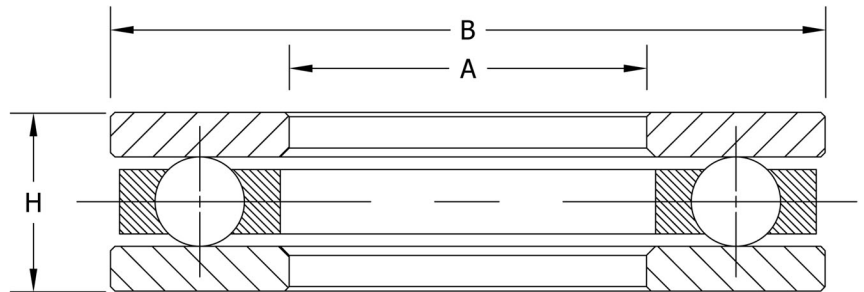


## Ball Thrust Bearing

Light Cross Section  
Flat Race  
Single Direction



Bearing Designation	Bore Diameter (d)	Outside Diameter (D)	Width (T)	Dynamic Load C (Lbs)	Static Load Co (Lbs)	Limiting Speed Grease (RPM)	Limiting Speed Oil (RPM)	Weight Lbs
EW1/4	0.250"	0.656"	0.25000"	257	91	14400	18000	0.02
EW5/16	0.313"	0.750"	0.25000"	292	121	12000	15000	0.02
EW3/8	0.375"	0.813"	0.25000"	279	121	10400	13000	0.02
EW1/2	0.500"	0.969"	0.25000"	351	181	8800	11000	0.03
EW5/8	0.625"	1.094"	0.28125"	468	234	7600	9500	0.03
EW3/4	0.750"	1.313"	0.28125"	495	284	6000	7500	0.05
EW7/8	0.875"	1.500"	0.37500"	702	410	5200	6500	0.09
EW1	1.000"	1.625"	0.37500"	684	410	4800	6000	0.09
EW1 1/8	1.125"	1.750"	0.37500"	729	477	4400	5500	0.10
EW1 1/4	1.250"	2.063"	0.50000"	1170	729	3840	4800	0.20
EW1 3/8	1.375"	2.188"	0.50000"	1260	846	3520	4400	0.22
EW1 1/2	1.500"	2.313"	0.50000"	1422	1026	3440	4300	0.24
EW1 5/8	1.625"	2.438"	0.50000"	1323	963	3120	3900	0.25
EW1 3/4	1.750"	2.625"	0.62500"	1656	1224	2880	3600	0.39
EW1 7/8	1.875"	2.750"	0.62500"	1629	1224	2720	3400	0.41
EW2	2.000"	2.875"	0.62500"	1602	1224	2560	3200	0.43



**Materials:** Rings and balls are constructed of thru-hardened 52100 steel. Retainer is bronze (M) or plastic (TN) for bore diameters of 1/2" and smaller.

US Corporate Headquarters:  
2100 Pacific Street  
Hauppauge NY, 11788  
[www.tritanpt.com](http://www.tritanpt.com)



Exclusively Distributed by:



888-4-Bearings