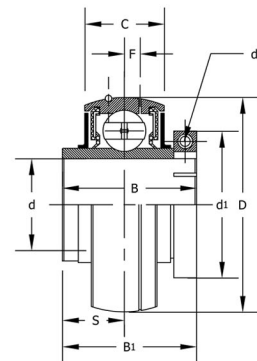
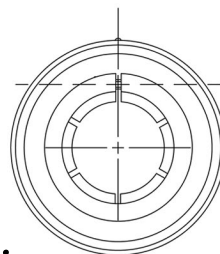


Premere-Loc Insert Bearings

The TRITAN Premere-LOC Insert bearings and mounted units provide for quieter, smoother and more efficient operation, especially under higher radial loads. The concentric locking collar provides a uniform grip to the inner ring, leading to an operational true center line, reducing vibration at higher speeds. As well, the concentric locking force significantly reduces the chance of damaging the shaft.



These one-step easy installation inserts and units are ideal for bi-directional applications and can replace both set screw locking and eccentric collar locking bearings.

PART NUMBER	Dim. d (in)	Dim. D (in)	Dim. B (in)	Dim. C (in)	Dim. S (in)	Dim. F (in)	Dim. B1 (in)	Dim. d1 (in)	Dim. ds (in)	Dynamic load ratings (lb)	Static load ratings (lb)	Weight (lb)
UC204-12T	0.75	1.85	1.22	0.67	0.5	0.15	1.31	1.75	32x5/8UNC	2878	1484	0.35
UC205-16T	1.00	2.05	1.34	0.67	0.56	0.15	1.44	1.94	32x5/8UNC	3147	1765	0.44
UC206-19T	1.19	2.44	1.50	0.75	0.63	0.2	1.56	2.19	32x5/8UNC	4373	2529	0.71
UC207-23T	1.44	2.83	1.69	0.79	0.69	0.22	1.75	2.56	24x3/4UNC	5778	3417	0.99
UC208-24T	1.50	3.15	1.94	0.83	0.75	0.24	2.00	2.69	24x3/4UNC	6632	4069	1.50
UC209-27T	1.69	3.35	1.94	0.87	0.75	0.25	2.00	2.94	24x3/4UNC	7351	4699	1.63
UC210-31T	1.94	3.54	2.03	0.94	0.75	0.26	2.09	3.37	20x15/16UNC	7868	5216	1.81

Interchange

TRITAN #	Fafnir	Peer	AMI	FYH	SM
UC204-12T	GC1012KRRB	GR204-12	UE204-12	KB204-12UC	2-012T
UC205-16T	GC1100KRRB	GR205-16	UE205-16	KB205-16	2-1T
UC206-19T	GC1103KRRB	GR206-19	UE206-19	KB206-19UC	2-13T
UC207-23T	GC1107KRRB	GR207-23	UE207-23	KB207-23UC	2-17T
UC208-24T	GC1108KRRB	GR208-24	UE208-24	KB208-24UC	2-18T
UC209-27T	GC1111KRRB	GR209-27	UE209-27	KB209-27UC	2-111T
UC210-31T	GC1115KRRB	GR210-31	UE210-31	KB210-31UC	2-115T