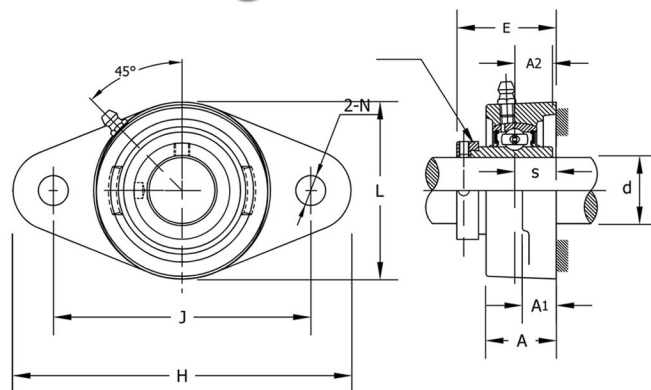


2 Bolt Flange - All Stainless – Eccentric Locking Collar

- Polished 304 Stainless Steel Flange
- Wide Inner Ring Stainless Steel Insert
- Lubricated with (H1) Food Grade Grease

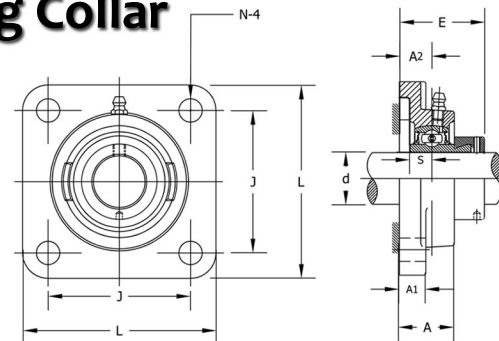


Bearing Designation	Shaft Diameter (d)	Housing Length (H)	Mounting Hole center-to-center (J)	Housing base thickness (A ₁)	Bearing Inner Race Width - Short Side (S)	Flange Height (A)	Mounting Hole Diameter (N)	Housing Width (L)	Flange Assembly Height (E)	Mounting Base to Bearing Center (A ₂)	Bolt Size (in)	Insert No.	Housing No.	Weight (lb)	Basic Dynamic Load Rating lbs	Basic Static Load Rating lbs
HCFLSS204-20MM	0.7874	4.4488	3.5433	0.7480	0.5906	1.1614	0.4724	2.3622	1.7205	0.6732	3/8	HC204-20MM	FLU204	1.39	2877.55	1494.98
HCFLSS204-12	0.7500	4.4488	3.5433	0.7480	0.5906	1.1614	0.4724	2.3622	1.7205	0.6732	3/8	HC204-12	FLU204	1.39	2877.55	1494.98
HCFLSS205-25MM	0.9843	4.8425	3.8976	0.7480	0.5906	1.1811	0.4724	2.6772	1.7480	0.689	3/8	HC205-25MM	FLU205	1.76	3147.33	1764.75
HCFLSS205-13	0.8125	4.8425	3.8976	0.7480	0.5906	1.1811	0.4724	2.6772	1.7480	0.689	3/8	HC205-13	FLU205	1.76	3147.33	1764.75
HCFLSS205-14	0.8750	4.8425	3.8976	0.7480	0.5906	1.1811	0.4724	2.6772	1.7480	0.689	3/8	HC205-14	FLU205	1.76	3147.33	1764.75
HCFLSS205-15	0.9375	4.8425	3.8976	0.7480	0.5906	1.1811	0.4724	2.6772	1.7480	0.689	3/8	HC205-15	FLU205	1.76	3147.33	1764.75
HCFLSS205-16	1.0000	4.8425	3.8976	0.7480	0.5906	1.1811	0.4724	2.6772	1.7480	0.689	3/8	HC205-16	FLU205	1.76	3147.33	1764.75
HCFLSS206-30MM	1.1811	5.5905	4.5866	0.7874	0.6299	1.2795	0.4724	3.1496	1.9055	0.7205	3/8	HC206-30MM	FLU206	2.65	4386.02	2540.34
HCFLSS206-17	1.0625	5.5905	4.5866	0.7874	0.6299	1.2795	0.4724	3.1496	1.9055	0.7205	3/8	HC206-17	FLU206	2.65	4386.02	2540.34
HCFLSS206-18	1.1250	5.5905	4.5866	0.7874	0.6299	1.2795	0.4724	3.1496	1.9055	0.7205	3/8	HC206-18	FLU206	2.65	4386.02	2540.34
HCFLSS206-19	1.1875	5.5905	4.5866	0.7874	0.6299	1.2795	0.4724	3.1496	1.9055	0.7205	3/8	HC206-19	FLU206	2.65	4386.02	2540.34
HCFLSS206-20	1.2500	5.5905	4.5866	0.7874	0.6299	1.2795	0.4724	3.1496	1.9055	0.7205	3/8	HC206-20	FLU206	2.65	4386.02	2540.34
HCFLSS207-35MM	1.3780	6.2204	5.1181	0.8268	0.6693	1.4173	0.5512	3.5433	2.0118	0.7402	7/16	HC207-35MM	FLU207	3.53	5777.59	3439.58
HCFLSS207-20	1.2500	6.2204	5.1181	0.8268	0.6693	1.4173	0.5512	3.5433	2.0118	0.7402	7/16	HC207-20	FLU207	3.53	5777.59	3439.58
HCFLSS207-21	1.3125	6.2204	5.1181	0.8268	0.6693	1.4173	0.5512	3.5433	2.0118	0.7402	7/16	HC207-21	FLU207	3.53	5777.59	3439.58
HCFLSS207-22	1.3750	6.2204	5.1181	0.8268	0.6693	1.4173	0.5512	3.5433	2.0118	0.7402	7/16	HC207-22	FLU207	3.53	5777.59	3439.58
HCFLSS207-23	1.4375	6.2204	5.1181	0.8268	0.6693	1.4173	0.5512	3.5433	2.0118	0.7402	7/16	HC207-23	FLU207	3.53	5777.59	3439.58
HCFLSS208-40MM	1.5748	6.7717	5.6496	0.9449	0.6693	1.5354	0.5512	3.9370	2.2165	0.8425	7/16	HC208-40MM	FLU208	4.19	6631.86	4069.04
HCFLSS208-24	1.5000	6.7717	5.6496	0.9449	0.6693	1.5354	0.5512	3.9370	2.2165	0.8425	7/16	HC208-24	FLU208	4.19	6631.86	4069.04
HCFLSS208-25	1.5625	6.7717	5.6496	0.9449	0.6693	1.5354	0.5512	3.9370	2.2165	0.8425	7/16	HC208-25	FLU208	4.19	6631.86	4069.04
HCFLSS209-45MM	1.7717	7.0866	5.8465	0.9449	0.7087	1.5748	0.6299	4.2520	2.2165	0.8425	1/2	HC209-45MM	FLU209	5.07	7103.96	4631.06
HCFLSS209-26	1.6250	7.0866	5.8465	0.9449	0.7087	1.5748	0.6299	4.2520	2.2165	0.8425	1/2	HC209-26	FLU209	5.07	7103.96	4631.06
HCFLSS209-27	1.6875	7.0866	5.8465	0.9449	0.7087	1.5748	0.6299	4.2520	2.2165	0.8425	1/2	HC209-27	FLU209	5.07	7103.96	4631.06
HCFLSS209-28	1.7500	7.0866	5.8465	0.9449	0.7087	1.5748	0.6299	4.2520	2.2165	0.8425	1/2	HC209-28	FLU209	5.07	7103.96	4631.06
HCFLSS210-50MM	1.9685	7.4803	6.1811	1.1024	0.7874	1.7717	0.7087	4.5276	2.4685	0.9685	5/8	HC210-50MM	FLU210	5.74	7868.31	5215.57
HCFLSS210-29	1.8125	7.4803	6.1811	1.1024	0.7874	1.7717	0.7087	4.5276	2.4685	0.9685	5/8	HC210-29	FLU210	5.74	7868.31	5215.57
HCFLSS210-30	1.8750	7.4803	6.1811	1.1024	0.7874	1.7717	0.7087	4.5276	2.4685	0.9685	5/8	HC210-30	FLU210	5.74	7868.31	5215.57
HCFLSS210-31	1.9375	7.4803	6.1811	1.1024	0.7874	1.7717	0.7087	4.5276	2.4685	0.9685	5/8	HC210-31	FLU210	5.74	7868.31	5215.57
HCFLSS210-32	2.0000	7.4803	6.1811	1.1024	0.7874	1.7717	0.7087	4.5276	2.4685	0.9685	5/8	HC210-32	FLU210	5.74	7868.31	5215.57
HCFLSS211-55MM	2.1654	8.5433	7.2441	1.2205	0.8268	1.8898	0.7087	5.0394	2.8110	1.0945	5/8	HC211-55MM	FLU211	8.38	9779.19	6564.42
HCFLSS211-32	2.1250	8.5433	7.2441	1.2205	0.8268	1.8898	0.7087	5.0394	2.8110	1.0945	5/8	HC211-32	FLU211	8.38	9779.19	6564.42
HCFLSS211-33	2.1875	8.5433	7.2441	1.2205	0.8268	1.8898	0.7087	5.0394	2.8110	1.0945	5/8	HC211-33	FLU211	8.38	9779.19	6564.42
HCFLSS211-34	2.2500	8.5433	7.2441	1.2205	0.8268	1.8898	0.7087	5.0394	2.8110	1.0945	5/8	HC211-34	FLU211	8.38	9779.19	6564.42
HCFLSS211-35	2.3750	8.5433	7.2441	1.2205	0.8268	1.8898	0.7087	5.0394	2.8110	1.0945	5/8	HC211-35	FLU211	8.38	9779.19	6564.42

Stainless Steel Ball Bearing Flange units are suitable for use in industrial and commercial applications that require corrosion resistance due to frequent wash-downs or are operating in a caustic environments such as food processing equipment and machinery, and pharmaceutical producing / processing equipment, among many others.

4 Bolt Flange - All Stainless – Eccentric Locking Collar

- Polished 304 Stainless Steel Flange
- Wide Inner Ring Stainless Steel Insert
- Lubricated with (H1) Food Grade Grease

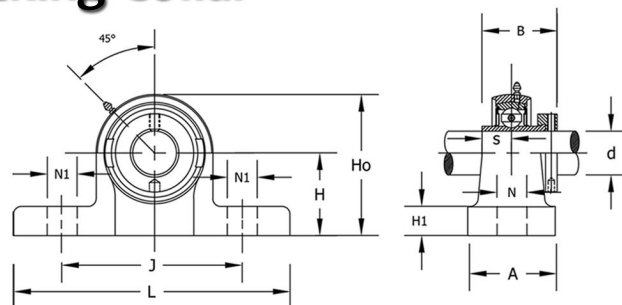


Bearing Designation	Shaft Diameter (d)	Housing length (L)	Mounting Hole center-to-center (J)	Mounting Base to Bearing Center (A ₂)	Housing base thickness (A ₁)	Flange Height (A)	Mounting Hole Diameter (N)	Flange Assembly Height (E)	Bearing Inner Race Width - Short Side (S)	Bolt Size (in)	Insert No.	Housing No.	Weight (lb)	Basic Dynamic Load Rating lbs	Basic Static Load Rating lbs
HCFSS203-17MM	0.6693	3.3858	2.5000	0.7480	0.5906	1.1614	0.4724	1.7953	0.6732	3/8	HC203-17MM	FU204	1.54	2877.55	1494.98
HCFSS203-11	0.6875	3.3858	2.5000	0.7480	0.5906	1.1614	0.4724	1.7953	0.6732	3/8	HC203-11	FU204	1.54	2877.55	1494.98
HCFSS204-20MM	0.7874	3.3858	2.5000	0.7480	0.5906	1.1614	0.4724	1.7953	0.6732	3/8	HC204-20MM	FU204	1.50	2877.55	1494.98
HCFSS204-12	0.7500	3.3858	2.7559	0.7480	0.5906	1.1614	0.4724	1.7953	0.6732	3/8	HC204-12	FU204	1.50	2877.55	1494.98
HCFSS205-25MM	0.9843	3.6614	2.7559	0.7480	0.5906	1.1811	0.4724	1.8071	0.6890	3/8	HC205-25MM	FU205	1.79	3147.33	1764.75
HCFSS205-14	0.8750	3.6614	2.7559	0.7480	0.5906	1.1811	0.4724	1.8071	0.6890	3/8	HC205-14	FU205	1.79	3147.33	1764.75
HCFSS205-15	0.9375	3.6614	2.7559	0.7480	0.5906	1.1811	0.4724	1.8071	0.6890	3/8	HC205-15	FU205	1.79	3147.33	1764.75
HCFSS205-16	1.0000	3.6614	3.2480	0.7480	0.5906	1.1811	0.4724	1.8071	0.6890	3/8	HC205-16	FU205	1.79	3147.33	1764.75
HCFSS206-30MM	1.1811	4.1732	3.2480	0.7874	0.6299	1.2795	0.4724	1.9724	0.7205	3/8	HC206-30MM	FU206	2.56	4386.02	2540.34
HCFSS206-17	1.0625	4.1732	3.2480	0.7874	0.6299	1.2795	0.4724	1.9724	0.7205	3/8	HC206-17	FU206	2.56	4386.02	2540.34
HCFSS206-18	1.1250	4.1732	3.2480	0.7874	0.6299	1.2795	0.4724	1.9724	0.7205	3/8	HC206-18	FU206	2.56	4386.02	2540.34
HCFSS206-19	1.1875	4.1732	3.2480	0.7874	0.6299	1.2795	0.4724	1.9724	0.7205	3/8	HC206-19	FU206	2.56	4386.02	2540.34
HCFSS206-20	1.2500	4.1732	3.6220	0.7874	0.6299	1.2795	0.4724	1.9724	0.7205	3/8	HC206-20	FU206	2.56	4386.02	2540.34
HCFSS207-35MM	1.3780	4.5669	3.6220	0.8268	0.6693	1.3780	0.5512	2.0984	0.7402	7/16	HC207-35MM	FU207	3.31	5777.59	3439.58
HCFSS207-20	1.2500	4.5669	3.6220	0.8268	0.6693	1.3780	0.5512	2.0984	0.7402	7/16	HC207-20	FU207	3.31	5777.59	3439.58
HCFSS207-21	1.3125	4.5669	3.6220	0.8268	0.6693	1.3780	0.5512	2.0984	0.7402	7/16	HC207-21	FU207	3.31	5777.59	3439.58
HCFSS207-22	1.3750	4.5669	3.6220	0.8268	0.6693	1.3780	0.5512	2.0984	0.7402	7/16	HC207-22	FU207	3.31	5777.59	3439.58
HCFSS207-23	1.4375	4.5669	3.9961	0.8268	0.6693	1.3780	0.5512	2.0984	0.7402	7/16	HC207-23	FU207	3.31	5777.59	3439.58
HCFSS208-40MM	1.5748	5.0787	3.9961	0.9449	0.6693	1.5354	0.5512	2.3189	0.8425	7/16	HC208-40MM	FU208	4.30	6631.86	4069.04
HCFSS208-24	1.5000	5.0787	3.9961	0.9449	0.6693	1.5354	0.5512	2.3189	0.8425	7/16	HC208-24	FU208	4.30	6631.86	4069.04
HCFSS208-25	1.5625	5.0787	4.1339	0.9449	0.6693	1.5354	0.5512	2.3189	0.8425	7/16	HC208-25	FU208	4.30	6631.86	4069.04
HCFSS209-45MM	1.7717	5.3150	4.1339	0.9449	0.7087	1.5748	0.6299	2.3189	0.8425	1/2	HC209-45MM	FU209	5.00	7103.96	4631.06
HCFSS209-26	1.6250	5.3150	4.1339	0.9449	0.7087	1.5748	0.6299	2.3189	0.8425	1/2	HC209-26	FU209	5.00	7103.96	4631.06
HCFSS209-27	1.6875	5.3150	4.1339	0.9449	0.7087	1.5748	0.6299	2.3189	0.8425	1/2	HC209-27	FU209	5.00	7103.96	4631.06
HCFSS209-28	1.7500	5.3150	4.3701	0.9449	0.7087	1.5748	0.6299	2.3189	0.8425	1/2	HC209-28	FU209	5.00	7103.96	4631.06
HCFSS210-50MM	1.9685	5.6299	4.3701	1.1024	0.7874	1.7717	0.7087	2.6024	0.9685	5/8	HC210-50MM	FU210	5.97	7868.31	5215.57
HCFSS210-30	1.8750	5.6299	4.3701	1.1024	0.7874	1.7717	0.7087	2.6024	0.9685	5/8	HC210-30	FU210	5.97	7868.31	5215.57
HCFSS210-31	1.9375	5.6299	4.3701	1.1024	0.7874	1.7717	0.7087	2.6024	0.9685	5/8	HC210-31	FU210	5.97	7868.31	5215.57
HCFSS210-32	2.0000	5.6299	5.1181	1.1024	0.7874	1.7717	0.7087	2.6024	0.9685	5/8	HC210-32	FU210	5.97	7868.31	5215.57
HCFSS211-55MM	2.1654	6.3780	5.1181	1.2205	0.8268	1.9291	0.7087	2.9370	1.0945	5/8	HC211-55MM	FU211	8.16	9779.19	6564.42
HCFSS211-32	2.0000	6.3780	5.1181	1.2205	0.8268	1.9291	0.7087	2.9370	1.0945	5/8	HC211-32	FU211	8.16	9779.19	6564.42
HCFSS211-34	2.1250	6.3780	5.1181	1.2205	0.8268	1.9291	0.7087	2.9370	1.0945	5/8	HC211-34	FU211	8.16	9779.19	6564.42
HCFSS211-35	2.1875	6.3780	5.6299	1.2205	0.8268	1.9291	0.7087	2.9370	1.0945	5/8	HC211-35	FU211	8.16	9779.19	6564.42
HCFSS212-60MM	2.3622	6.8898	5.6299	1.3386	0.8661	2.1063	0.7087	3.1811	1.2205	5/8	HC212-60MM	FU212	10.12	10723.39	7396.21
HCFSS212-36	2.2500	6.8898	5.6299	1.3386	0.8661	2.1063	0.7087	3.1811	1.2205	5/8	HC212-36	FU212	10.12	10723.39	7396.21
HCFSS212-38	2.3750	6.8898	5.6299	1.3386	0.8661	2.1063	0.7087	3.1811	1.2205	5/8	HC212-38	FU212	10.12	10723.39	7396.21
HCFSS212-39	2.4375	6.8898	5.8661	1.3386	0.8661	2.1063	0.7087	3.1811	1.2205	5/8	HC212-39	FU212	10.12	10723.39	7396.21
HCFSS213-65MM	2.5591	7.2441	5.8661	1.4961	0.8661	2.2835	0.7087	3.5276	1.3425	5/8	HC213-65MM	FU213	13.21	12926.51	8992.36
HCFSS213-40	2.5000	7.2441	5.9843	1.4961	0.8661	2.2835	0.7087	3.5276	1.3425	5/8	HC213-40	FU213	13.21	12926.51	8992.36
HCFSS214-70MM	2.7559	7.4016	6.2598	1.4961	0.9055	2.3228	0.7087	3.5276	1.3425	5/8	HC214-70MM	FU214	14.09	13668.38	10116.40
HCFSS214-44	2.7500	7.4016	6.2598	1.4961	0.9055	2.3228	0.7087	3.5276	1.3425	5/8	HC214-44	FU214	14.09	13668.38	10116.40
HCFSS215-75MM	2.9528	7.8740	6.2598	1.6142	0.9449	2.4409	0.7087	3.7717	1.4685	5/8	HC215-75MM	FU215	16.14	14837.39	11128.04
HCFSS215-47	2.9375	7.8740	6.2598	1.6142	0.9449	2.4409	0.7087	3.7717	1.4685	5/8	HC215-47	FU215	16.14	14837.39	11128.04
HCFSS215-48	3.0000	7.8740		1.6142	0.9449	2.4409	0.7087	3.7717	1.4685	5/8	HC215-48	FU215	16.14	14837.39	11128.04

Stainless Steel Ball Bearing Flange units are suitable for use in industrial and commercial applications that require corrosion resistance due to frequent wash-downs or are operating in a caustic environment such as, food processing equipment and machinery, and pharmaceutical producing / processing equipment, among many others.

Pillow Block - All Stainless – Eccentric Locking Collar

- Polished Solid Base 304 Stainless Steel Block
- Wide Inner Ring Stainless Steel Insert
- Lubricated with (H1) Food Grade Grease



Bearing Designation	Shaft Diameter (d)	Shaft Height (H)	Housing Length (L)	Mounting Hole center-to-center (J)	Housing Width (A)	Mounting Slot Width (N)	Mounting Slot Length (N ₁)	Housing Base Thickness (H ₁)	Housing Height (H _o)	Bearing Inner Race Width (B)	Bearing Inner Race Width - Short Side (S)	Bolt Size (in)	Insert No.	Housing No.	Weight (lb)	Basic Dynamic Load Rating lbs	Basic Static Load Rating lbs
HCPSS204-20MM	0.7874	1.3125	5.0000	3.7402	1.4961	0.5118	0.7480	0.5512	2.5591	1.7205	0.6732	3/8	HC204-20MM	P204	1.61	2880	1490
HCPSS204-12	0.7500	1.3125	5.0000	3.7402	1.4961	0.5118	0.7480	0.5512	2.5591	1.7205	0.6732	3/8	HC204-12	P204	1.61	2880	1490
HCPSS205-25MM	0.9843	1.4375	5.5118	4.1339	1.4961	0.5118	0.7480	0.5906	2.7953	1.7480	0.6890	3/8	HC205-25MM	P205	1.94	3150	1760
HCPSS205-14	0.8750	1.4375	5.5118	4.1339	1.4961	0.5118	0.7480	0.5906	2.7953	1.7480	0.6890	3/8	HC205-14	P205	2.03	3150	1760
HCPSS205-15	0.9375	1.4375	5.5118	4.1339	1.4961	0.5118	0.7480	0.5906	2.7953	1.7480	0.6890	3/8	HC205-15	P205	1.98	3150	1760
HCPSS205-16	1.0000	1.4375	5.5118	4.1339	1.4961	0.5118	0.7480	0.5906	2.7953	1.7480	0.6890	3/8	HC205-16	P205	1.94	3150	1760
HCPSS206-30MM	1.8110	1.6875	6.2992	4.7638	1.7323	0.6693	0.7874	0.6693	3.3071	1.9055	0.7205	1/2	HC206-30MM	P206	3.02	4390	2540
HCPSS206-17	1.0625	1.6875	6.2992	4.7638	1.7323	0.6693	0.7874	0.6693	3.3071	1.9055	0.7205	1/2	HC206-17	P206	3.13	4390	2540
HCPSS206-18	1.1250	1.6875	6.2992	4.7638	1.7323	0.6693	0.7874	0.6693	3.3071	1.9055	0.7205	1/2	HC206-18	P206	3.06	4390	2540
HCPSS206-19	1.1875	1.6875	6.2992	4.7638	1.7323	0.6693	0.7874	0.6693	3.3071	1.9055	0.7205	1/2	HC206-19	P206	3.02	4390	2540
HCPSS206-20	1.2500	1.6875	6.2992	4.7638	1.7323	0.6693	0.7874	0.6693	3.3071	1.9055	0.7205	1/2	HC206-20	P206	2.95	4390	2540
HCPSS207-35MM	1.3780	1.8750	6.5748	5.0000	1.8898	0.6693	0.7874	0.7087	3.6614	2.0118	0.7402	1/2	HC207-35MM	P207	3.75	5780	3440
HCPSS207-20	1.2500	1.8750	6.5748	5.0000	1.8898	0.6693	0.7874	0.7087	3.6614	2.0118	0.7402	1/2	HC207-20	P207	3.9	5780	3440
HCPSS207-21	1.3125	1.8750	6.5748	5.0000	1.8898	0.6693	0.7874	0.7087	3.6614	2.0118	0.7402	1/2	HC207-21	P207	3.81	5780	3440
HCPSS207-22	1.3750	1.8750	6.5748	5.0000	1.8898	0.6693	0.7874	0.7087	3.6614	2.0118	0.7402	1/2	HC207-22	P207	3.75	5780	3440
HCPSS207-23	1.4375	1.8750	6.5748	5.0000	1.8898	0.6693	0.7874	0.7087	3.6614	2.0118	0.7402	1/2	HC207-23	P207	3.68	5780	3440
HCPSS208-40MM	1.5748	1.9375	7.2441	5.3937	2.1260	0.6693	0.7874	0.7087	3.9370	2.2165	0.8425	1/2	HC208-40MM	P208	4.5	6630	4070
HCPSS208-24	1.5000	1.9375	7.2441	5.3937	2.1260	0.6693	0.7874	0.7087	3.9370	2.2165	0.8425	1/2	HC208-24	P208	4.61	6630	4070
HCPSS208-25	1.5625	1.9375	7.2441	5.3937	2.1260	0.6693	0.7874	0.7087	3.9370	2.2165	0.8425	1/2	HC208-25	P208	4.52	6630	4070
HCPSS209-45MM	1.7717	2.1250	7.4803	5.7480	2.1260	0.6693	0.7874	0.7874	4.1732	2.2165	0.8425	1/2	HC209-45MM	P209	5.09	7100	4630
HCPSS209-26	1.6250	2.1250	7.4803	5.7480	2.1260	0.6693	0.7874	0.7874	4.1732	2.2165	0.8425	1/2	HC209-26	P209	5.34	7100	4630
HCPSS209-27	1.6875	2.1250	7.4803	5.7480	2.1260	0.6693	0.7874	0.7874	4.1732	2.2165	0.8425	1/2	HC209-27	P209	5.22	7100	4630
HCPSS209-28	1.7500	2.1250	7.4803	5.7480	2.1260	0.6693	0.7874	0.7874	4.1732	2.2165	0.8425	1/2	HC209-28	P209	5.14	7100	4630
HCPSS210-50MM	1.9685	2.2500	8.1102	6.2598	2.3622	0.7874	0.9055	0.8268	4.4488	2.4685	0.9685	5/8	HC210-50MM	P210	6.28	7870	5220
HCPSS210-30	1.8750	2.2500	8.1102	6.2598	2.3622	0.7874	0.9055	0.8268	4.4488	2.4685	0.9685	5/8	HC210-30	P210	6.48	7870	5220
HCPSS210-31	1.9375	2.2500	8.1102	6.2598	2.3622	0.7874	0.9055	0.8268	4.4488	2.4685	0.9685	5/8	HC210-31	P210	6.35	7870	5220
HCPSS210-32	2.0000	2.2500	8.1102	6.2598	2.3622	0.7874	0.9055	0.8268	4.4488	2.4685	0.9685	5/8	HC210-32	P210	6.22	7870	5220
HCPSS211-55MM	2.1654	2.5000	8.6220	6.7323	2.3622	0.7874	0.9055	0.9055	4.9213	2.8110	1.0945	5/8	HC211-55MM	P211	7.76	9780	6560
HCPSS211-32	2.0000	2.5000	8.6220	6.7323	2.3622	0.7874	0.9055	0.9055	4.9213	2.8110	1.0945	5/8	HC211-32	P211	8.2	9780	6560
HCPSS211-34	2.1250	2.5000	8.6220	6.7323	2.3622	0.7874	0.9055	0.9055	4.9213	2.8110	1.0945	5/8	HC211-34	P211	7.87	9780	6560
HCPSS211-35	2.1875	2.5000	8.6220	6.7323	2.3622	0.7874	0.9055	0.9055	4.9213	2.8110	1.0945	5/8	HC211-35	P211	7.69	9780	6560
HCPSS212-60MM	2.3622	2.7500	9.4882	7.2441	2.7559	0.7874	0.9055	0.9843	5.4331	3.0630	1.2205	5/8	HC212-60MM	P212	11.55	10720	7400
HCPSS212-36	2.2500	2.7500	9.4882	7.2441	2.7559	0.7874	0.9055	0.9843	5.4331	3.0630	1.2205	5/8	HC212-36	P212	11.9	10720	7400
HCPSS212-38	2.3750	2.7500	9.4882	7.2441	2.7559	0.7874	0.9055	0.9843	5.4331	3.0630	1.2205	5/8	HC212-38	P212	11.6	10720	7400
HCPSS212-39	2.4375	2.7500	9.4882	7.2441	2.7559	0.7874	0.9055	0.9843	5.4331	3.0630	1.2205	5/8	HC212-39	P212	11.31	10720	7400
HCPSS213-65MM	2.5591	3.0000	10.4331	7.9921	2.7559	0.9843	1.1024	1.0630	5.9055	3.3740	1.3425	3/4	HC213-65MM	P213	12.59	12930	8990
HCPSS213-40	2.5000	3.0000	10.4331	7.9921	2.7559	0.9843	1.1024	1.0630	5.9055	3.3740	1.3425	3/4	HC213-40	P213	12.81	12930	8990
HCPSS214-70MM	2.7559	3.1250	10.4724	8.2677	2.8346	0.9843	1.1024	1.0630	6.1417	3.3740	1.3425	3/4	HC214-70MM	P214	14.77	13670	10120
HCPSS214-44	2.7500	3.1250	10.4724	8.2677	2.8346	0.9843	1.1024	1.0630	6.1417	3.3740	1.3425	3/4	HC214-44	P214	14.79	13670	10120
HCPSS215-75MM	2.9528	3.2500	10.8268	8.5433	2.9134	0.9843	1.1024	1.1024	6.3780	3.6260	1.4685	3/4	HC215-75MM	P215	17.17	14840	11130
HCPSS215-47	2.9375	3.2500	10.8268	8.5433	2.9134	0.9843	1.1024	1.1024	6.3780	3.6260	1.4685	3/4	HC215-47	P215	17.26	14840	11130
HCPSS215-48	3.0000	3.2500	10.8268	8.5433	2.9134	0.9843	1.1024	1.1024	6.3780	3.6260	1.4685	3/4	HC215-48	P215	16.95	14840	11130

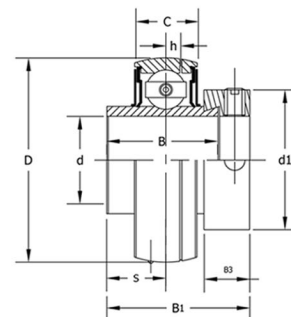
Stainless Steel Ball Bearing Pillow Block units are suitable for use in industrial and commercial applications that require corrosion resistance due to frequent wash-downs or are operating in a caustic environment such as, food processing equipment and machinery, and pharmaceutical producing / processing equipment, among many others.



US Corporate Headquarters:
2100 Pacific Street
Hauppauge NY, 11788
www.tritanpt.com

Stainless Steel Inserts – Eccentric Locking Collar

- 440 Stainless Steel
- Wide Inner Rings
- Dual Seal
- Lubricated with (H1) Food Grade Grease



Bearing Designation	Shaft Diameter (d)	Outer Diameter (D)	Width (B ₁)	Inner Width (B)	Outer Ring Width (C)	Bearing Inner Race Width - Short Side (S)	Bearing Center to Oil Hole Center (h)	(B ₂)	(D ₁)	Bearing Collar Set Screw (ds)	Weight (lb)	Basic Dynamic Load Rating lbs	Basic Static Load Rating lbs
SSHC201-12MM	0.4724	1.8504	1.7205	1.3465	0.6693	0.6732	0.1890	0.5315	1.3110	1/4-28UNF	0.64	2877.55	1494.98
SSHC201-8	0.5000	1.8504	1.7205	1.3465	0.6693	0.6732	0.1890	0.5315	1.3110	1/4-28UNF	0.64	2877.55	1494.98
SSHC202-15MM	0.5906	1.8504	1.7205	1.3465	0.6693	0.6732	0.1890	0.5315	1.3110	1/4-28UNF	0.6	2877.55	1494.98
SSHC202-10	0.6250	1.8504	1.7205	1.3465	0.6693	0.6732	0.1890	0.5315	1.3110	1/4-28UNF	0.57	2877.55	1494.98
SSHC203-17MM	0.6693	1.8504	1.7205	1.3465	0.6693	0.6732	0.1890	0.5315	1.3110	1/4-28UNF	0.55	2877.55	1494.98
SSHC203-11	0.6875	1.8504	1.7205	1.3465	0.6693	0.6732	0.1890	0.5315	1.3110	1/4-28UNF	0.55	2877.55	1494.98
SSHC204-20MM	0.7874	1.8504	1.7205	1.3465	0.6693	0.6732	0.1890	0.5315	1.3110	1/4-28UNF	0.51	2877.55	1494.98
SSHC204-12	0.7500	1.8504	1.7205	1.3465	0.6693	0.6732	0.1890	0.5315	1.3110	1/4-28UNF	0.51	2877.55	1494.98
SSHC205-25MM	0.9843	2.0472	1.7480	1.3740	0.6693	0.6890	0.1890	0.5315	1.5000	1/4-28UNF	0.6	3147.33	1764.75
SSHC205-14	0.8750	2.0472	1.7480	1.3740	0.6693	0.6890	0.1890	0.5315	1.5000	1/4-28UNF	0.68	3147.33	1764.75
SSHC205-15	0.9375	2.0472	1.7480	1.3740	0.6693	0.6890	0.1890	0.5315	1.5000	1/4-28UNF	0.64	3147.33	1764.75
SSHC205-16	1.0000	2.0472	1.7480	1.3740	0.6693	0.6890	0.1890	0.5315	1.5000	1/4-28UNF	0.6	3147.33	1764.75
SSHC206-30MM	1.1811	2.4409	1.9055	1.4370	0.7480	0.7205	0.2362	0.6260	1.7520	5/16-24UNF	0.99	4386.02	2540.34
SSHC206-17	1.0625	2.4409	1.9055	1.4370	0.7480	0.7205	0.2362	0.6260	1.7520	5/16-24UNF	1.1	4386.02	2540.34
SSHC206-18	1.1250	2.4409	1.9055	1.4370	0.7480	0.7205	0.2362	0.6260	1.7520	5/16-24UNF	1.04	4386.02	2540.34
SSHC206-19	1.1875	2.4409	1.9055	1.4370	0.7480	0.7205	0.2362	0.6260	1.7520	5/16-24UNF	0.99	4386.02	2540.34
SSHC206-20	1.2500	2.4409	1.9055	1.4370	0.7480	0.7205	0.2362	0.6260	1.7520	5/16-24UNF	0.93	4386.02	2540.34
SSHC207-35MM	1.3780	2.8346	2.0118	1.4803	0.7874	0.7402	0.2677	0.6890	2.1890	5/16-24UNF	1.32	5777.59	3439.58
SSHC207-20	1.2500	2.8346	2.0118	1.4803	0.7874	0.7402	0.2677	0.6890	2.1890	5/16-24UNF	1.48	5777.59	3439.58
SSHC207-21	1.3125	2.8346	2.0118	1.4803	0.7874	0.7402	0.2677	0.6890	2.1890	5/16-24UNF	1.39	5777.59	3439.58
SSHC207-22	1.3750	2.8346	2.0118	1.4803	0.7874	0.7402	0.2677	0.6890	2.1890	5/16-24UNF	1.32	5777.59	3439.58
SSHC207-23	1.4375	2.8346	2.0118	1.4803	0.7874	0.7402	0.2677	0.6890	2.1890	5/16-24UNF	1.26	5777.59	3439.58
SSHC208-40MM	1.5748	3.1496	2.2165	1.6850	0.8268	0.8425	0.2677	0.7205	2.3740	5/16-24UNF	1.74	6631.86	4069.04
SSHC208-24	1.5000	3.1496	2.2165	1.6850	0.8268	0.8425	0.2677	0.7205	2.3740	5/16-24UNF	1.85	6631.86	4069.04
SSHC208-25	1.5625	3.1496	2.2165	1.6850	0.8268	0.8425	0.2677	0.7205	2.3740	5/16-24UNF	1.76	6631.86	4069.04
SSHC209-45MM	1.7717	3.3465	2.2165	1.6850	0.8661	0.8425	0.2677	0.7205	2.5000	5/16-24UNF	1.87	7103.96	4631.06
SSHC209-26	1.6250	3.3465	2.2165	1.6850	0.8661	0.8425	0.2677	0.7205	2.5000	5/16-24UNF	2.12	7103.96	4631.06
SSHC209-27	1.6875	3.3465	2.2165	1.6850	0.8661	0.8425	0.2677	0.7205	2.5000	5/16-24UNF	2.01	7103.96	4631.06
SSHC209-28	1.7500	3.3465	2.2165	1.6850	0.8661	0.8425	0.2677	0.7205	2.5000	5/16-24UNF	1.92	7103.96	4631.06
SSHC210-50MM	1.9685	3.5433	2.4685	1.9370	0.9449	0.9685	0.2677	0.7205	2.7520	5/16-24UNF	2.18	7868.31	5215.57
SSHC210-30	1.8750	3.5433	2.4685	1.9370	0.9449	0.9685	0.2677	0.7205	2.7520	5/16-24UNF	2.38	7868.31	5215.57
SSHC210-31	1.9375	3.5433	2.4685	1.9370	0.9449	0.9685	0.2677	0.7205	2.7520	5/16-24UNF	2.25	7868.31	5215.57
SSHC210-32	2.0000	3.5433	2.4685	1.9370	0.9449	0.9685	0.2677	0.7205	2.7520	5/16-24UNF	2.12	7868.31	5215.57
SSHC211-55MM	2.1654	3.9370	2.8110	2.1850	0.9843	1.0945	0.3150	0.8150	3.0000	3/8-24UNF	2.91	9779.19	6564.42
SSHC211-32	2.0000	3.9370	2.8110	2.1850	0.9843	1.0945	0.3150	0.8150	3.0000	3/8-24UNF	3.35	9779.19	6564.42
SSHC211-34	2.1250	3.9370	2.8110	2.1850	0.9843	1.0945	0.3150	0.8150	3.0000	3/8-24UNF	3.02	9779.19	6564.42
SSHC211-35	2.1875	3.9370	2.8110	2.1850	0.9843	1.0945	0.3150	0.8150	3.0000	3/8-24UNF	2.84	9779.19	6564.42
SSHC212-60MM	2.3622	4.3307	3.0630	2.4370	1.0630	1.2205	0.3150	0.8780	3.3150	3/8-24UNF	4.14	10723.39	7396.21
SSHC212-36	2.2500	4.3307	3.0630	2.4370	1.0630	1.2205	0.3150	0.8780	3.3150	3/8-24UNF	4.5	10723.39	7396.21
SSHC212-38	2.3750	4.3307	3.0630	2.4370	1.0630	1.2205	0.3150	0.8780	3.3150	3/8-24UNF	4.19	10723.39	7396.21
SSHC212-39	2.4375	4.3307	3.0630	2.4370	1.0630	1.2205	0.3150	0.8780	3.3150	3/8-24UNF	3.9	10723.39	7396.21
SSHC213-65MM	2.5591	4.7244	3.3740	2.7008	1.1024	1.3425	0.3346	0.9252	3.3858	3/8-24UNF	5.31	12926.51	8992.36
SSHC213-40	2.5000	4.7244	3.3740	2.7008	1.1024	1.3425	0.3346	0.9252	3.3858	3/8-24UNF	5.53	12926.51	8992.36
SSHC214-43	2.6875	4.7244	3.3740	2.7008	1.1417	1.3425	0.3346	0.9252	3.3858	3/8-24UNF	5.91	13668.38	10116.4
SSHC214-44	2.7500	4.7244	3.3740	2.7008	1.1417	1.3425	0.3346	0.9252	3.3858	3/8-24UNF	5.64	13668.38	10116.4
SSHC215-75MM	2.9528	5.1181	3.6260	2.9528	1.1811	1.4685	0.3346	0.9252	4.0157	3/8-24UNF	6.26	14837.39	11128.04
SSHC215-47	2.9375	5.1181	3.6260	2.9528	1.1811	1.4685	0.3346	0.9252	4.0157	3/8-24UNF	6.35	14837.39	11128.04
SSHC215-48	3.0000	5.1181	3.6260	2.9528	1.1811	1.4685	0.3346	0.9252	4.0157	3/8-24UNF	6.04	14837.39	11128.04

TRITAN Insert bearings are designed for use in pillow block or flange units made to AFBMA standard and can be used in housings produced by most manufacturers. Ball Bearing mounted units using these Stainless Steel inserts are suitable for use in industrial and commercial applications that are subject to frequent wash-down, damp environments or harsh contaminants, in applications such as poultry, pharmaceutical processing, fishing, and chemical manufacturing.